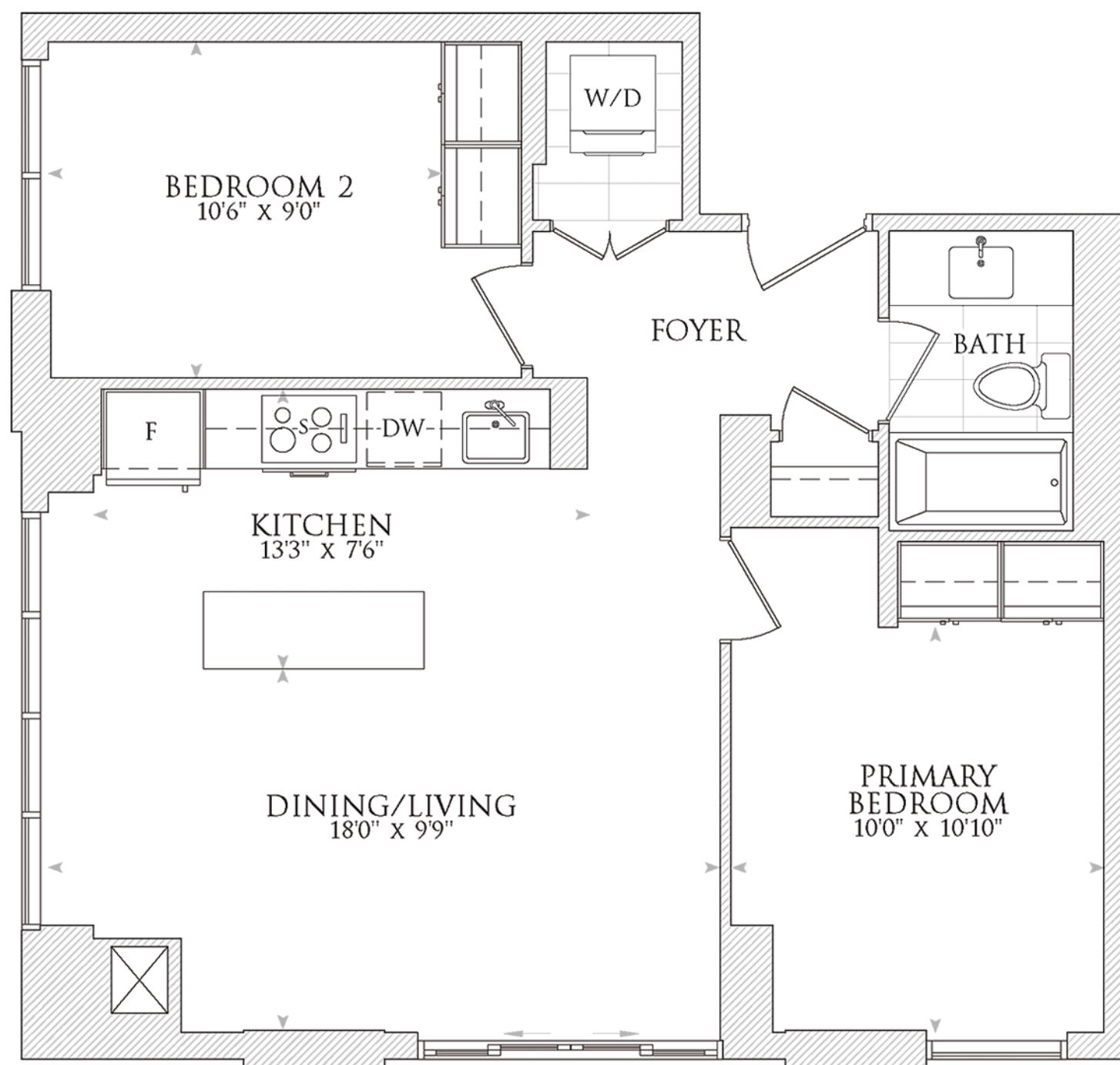


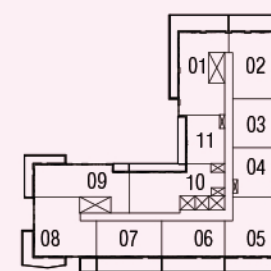
ABSOLUTE

SUITE | 769 FT² | FLOORS 5 TO 10 | SOUTHWEST FACING

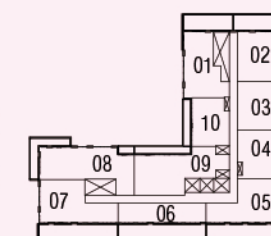


2 BEDROOMS, 1 BATHROOM

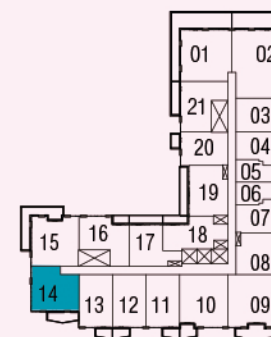
Disclaimer: Dimensions, specifications, tile floor patterns and architectural detailing including window size and location) are approximated and subject to modifications without notice. Orientation of suite may be reversed, and purchaser agrees to accept the same. Actual useable floor space may vary from the stated floor area. Ceiling height measured from top to bottom floor slab to underside of the slab above before finishes and excluding bulkheads and required drop ceilings. Balcony/ terrace may vary slightly from unit to unit. Purchasers should see Schedule A to their Agreement of Purchase and Sale for unit specific details of balcony/ terrace. Suites subject to availability. All details should be confirmed with your representative. E & O.E. May 2024.



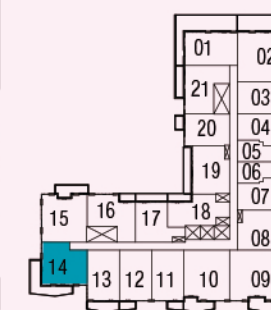
11th floor



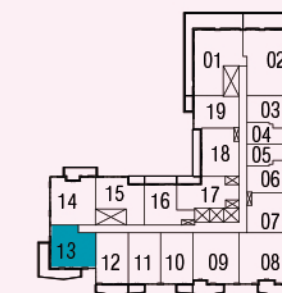
12th floor



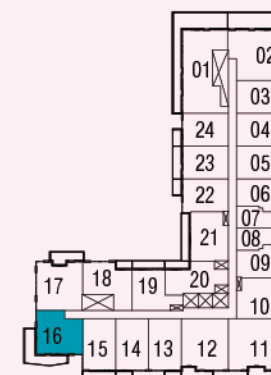
8th floor



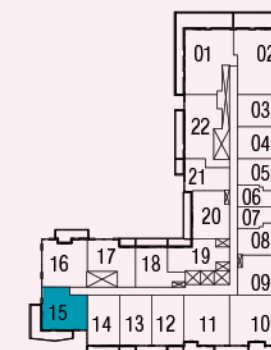
9th floor



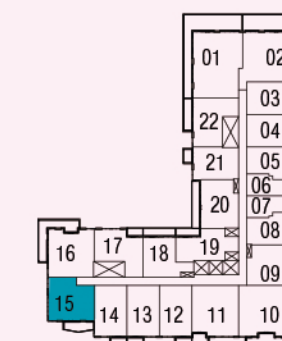
10th floor



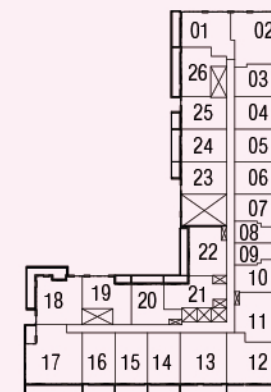
5th floor



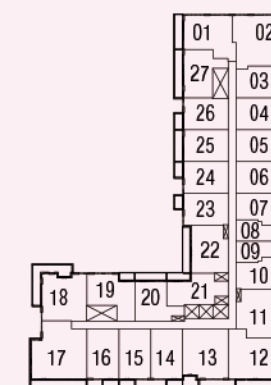
6th floor



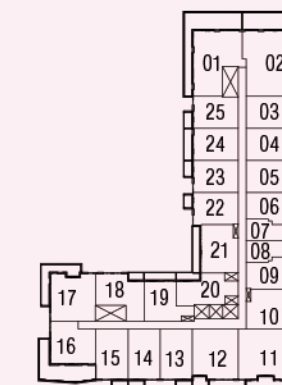
7th floor



2nd floor



3rd floor



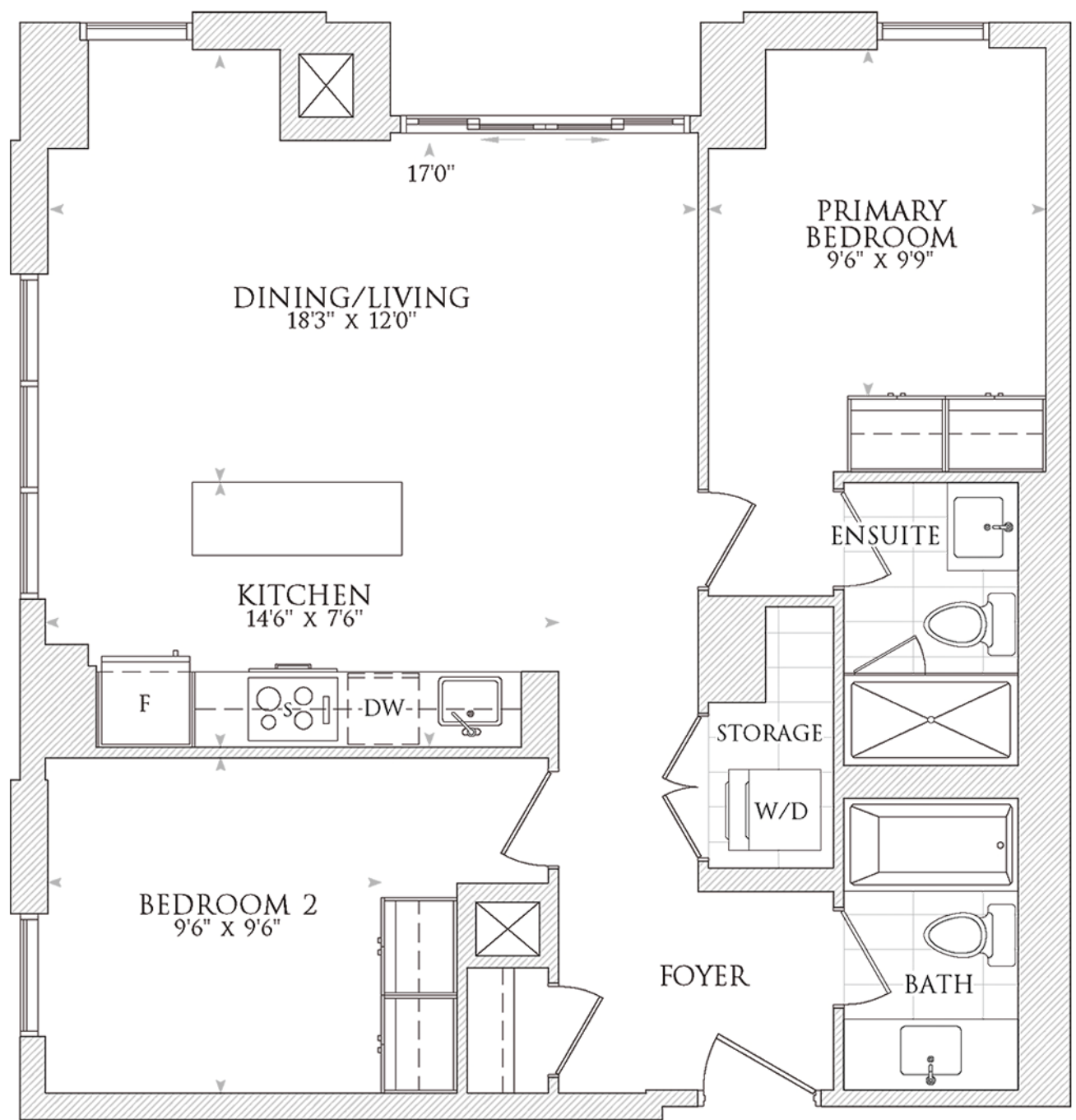
4th floor

Note: For specific balcony dimensions please see **Floorplan Balcony Schedule.**

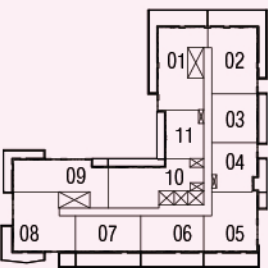


TOUCHSTONE

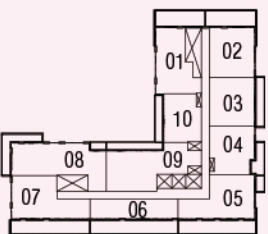
SUITE | 899 FT² | FLOORS 2 TO 10 | NORTHWEST FACING



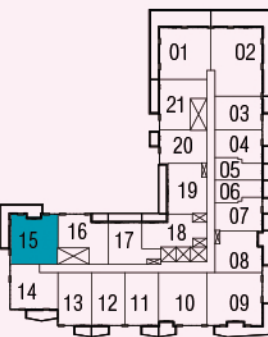
2 BEDROOMS, 2 BATHROOMS



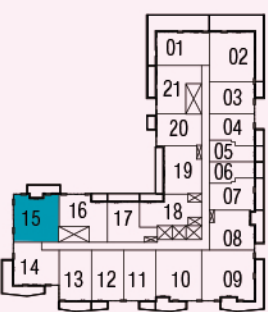
11th floor



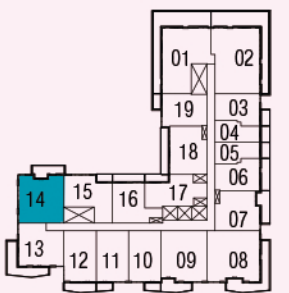
12th floor



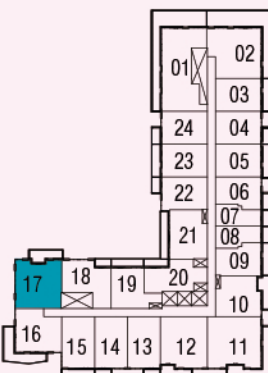
8th floor



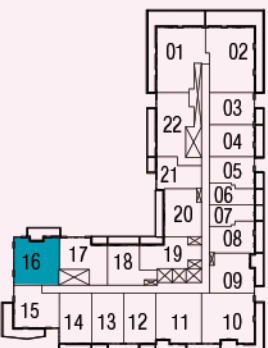
9th floor



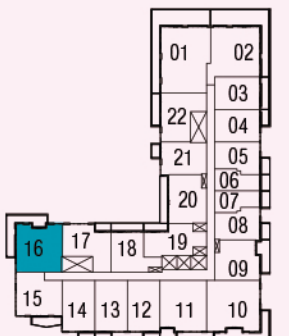
10th floor



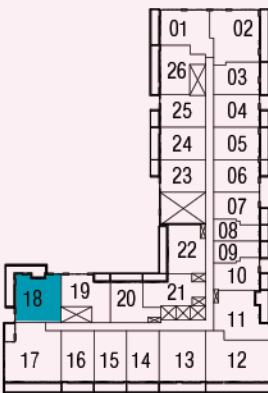
5th floor



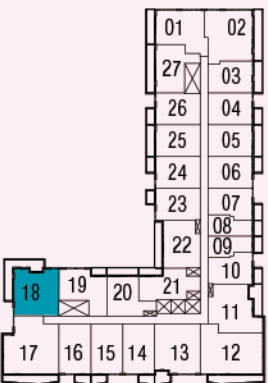
6th floor



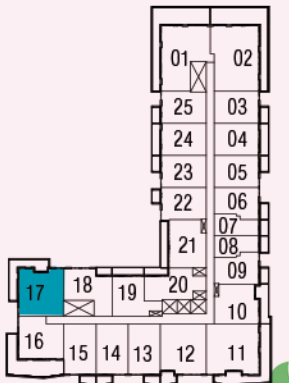
7th floor



2nd floor



3rd floor



4th floor

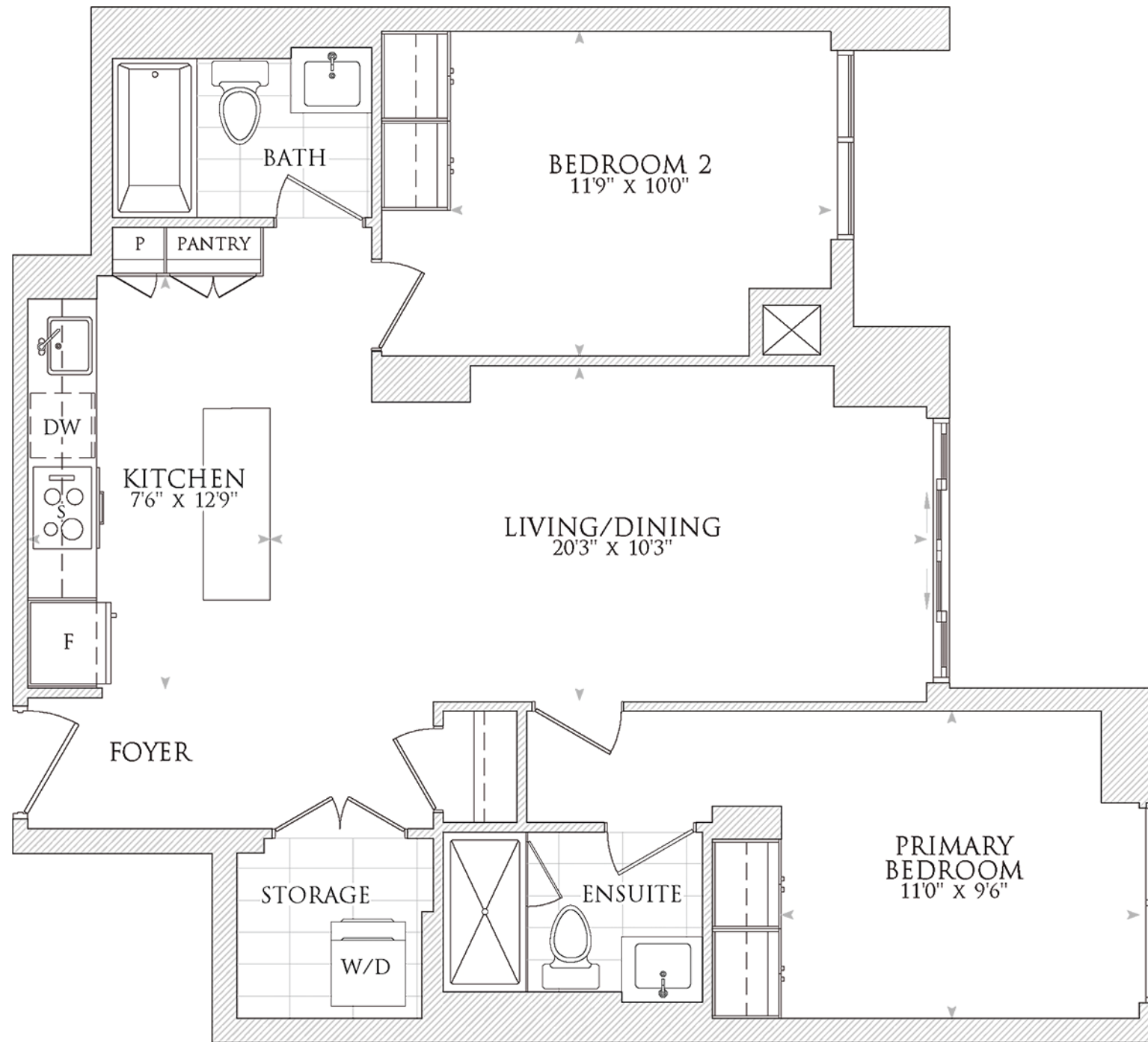
Note: For specific balcony dimensions please see **Floorplan Balcony Schedule.**



Disclaimer: Dimensions, specifications, tile floor patterns and architectural detailing including window size and location) are approximated and subject to modifications without notice. Orientation of suite may be reversed, and purchaser agrees to accept the same. Actual useable floor space may vary from the stated floor area. Ceiling height measured from top to bottom floor slab to underside of the slab above before finishes and excluding bulkheads and required drop ceilings. Balcony/ terrace may vary slightly from unit to unit. Purchasers should see Schedule A to their Agreement of Purchase and Sale for unit specific details of balcony/ terrace. Suites subject to availability. All details should be confirmed with your representative. E & O.E. May 2024.

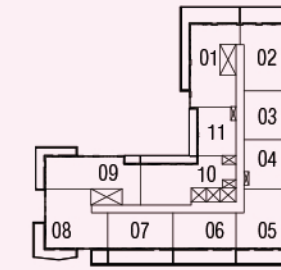
ULTIMATE

SUITE | 914 FT² | FLOORS 2 & 3 | WEST FACING

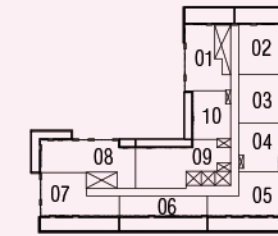


2 BEDROOMS, 2 BATHROOMS

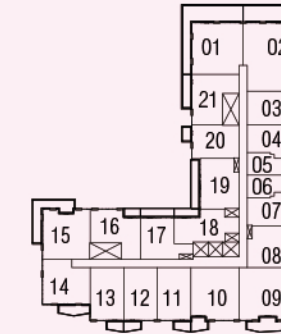
Disclaimer: Dimensions, specifications, tile floor patterns and architectural detailing including window size and location) are approximated and subject to modifications without notice. Orientation of suite may be reversed, and purchaser agrees to accept the same. Actual useable floor space may vary from the stated floor area. Ceiling height measured from top to bottom floor slab to underside of the slab above before finishes and excluding bulkheads and required drop ceilings. Balcony/ terrace may vary slightly from unit to unit. Purchasers should see Schedule A to their Agreement of Purchase and Sale for unit specific details of balcony/ terrace. Suites subject to availability. All details should be confirmed with your representative. E & O.E. May 2024.



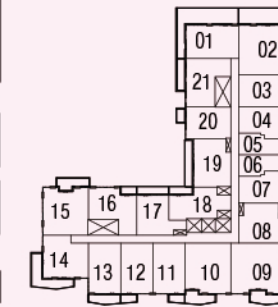
11th floor



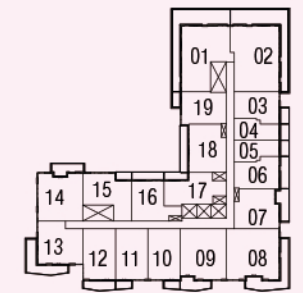
12th floor



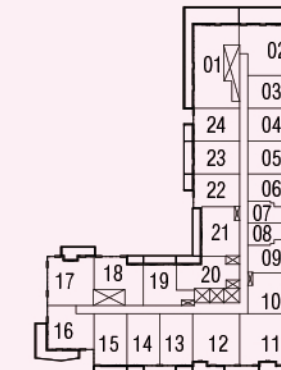
8th floor



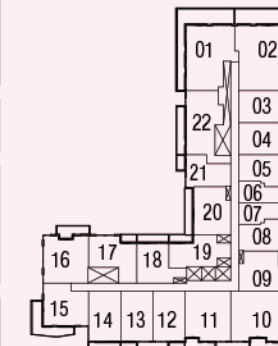
9th floor



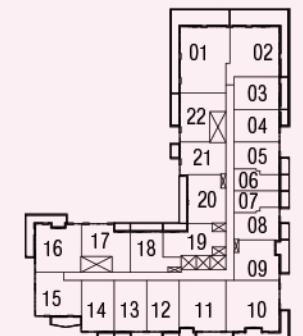
10th floor



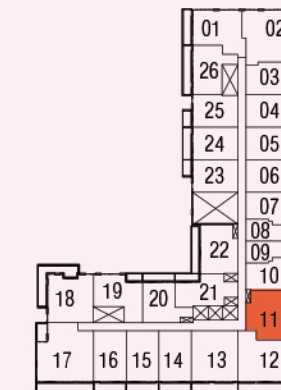
5th floor



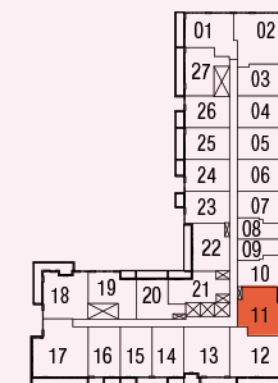
6th floor



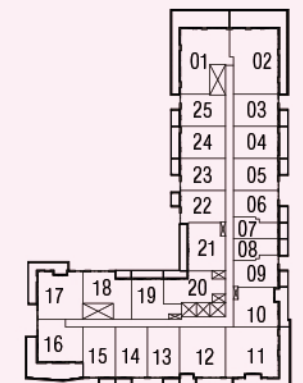
7th floor



2nd floor



3rd floor



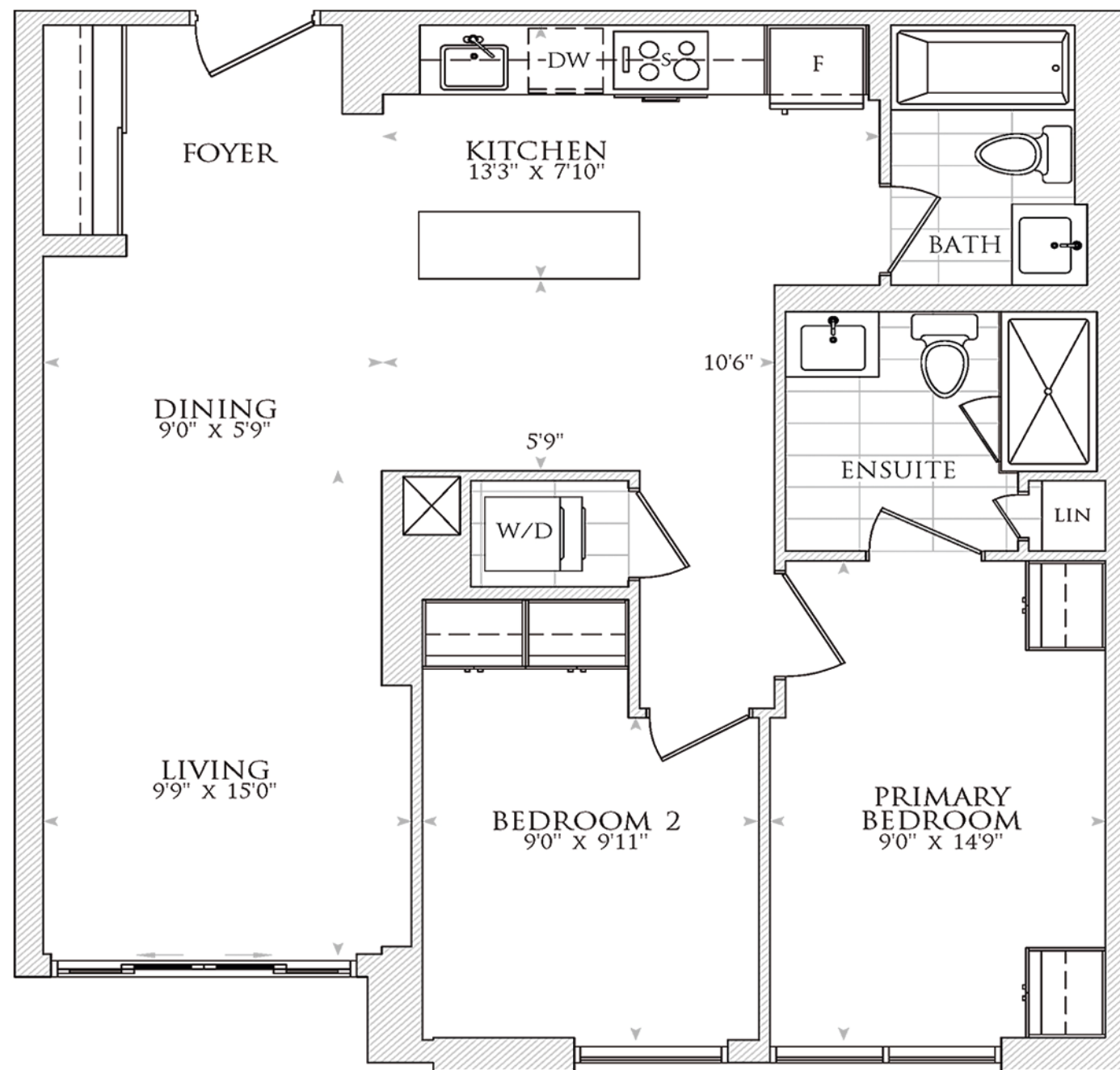
4th floor

Note: For specific balcony dimensions please see **Floorplan Balcony Schedule.**



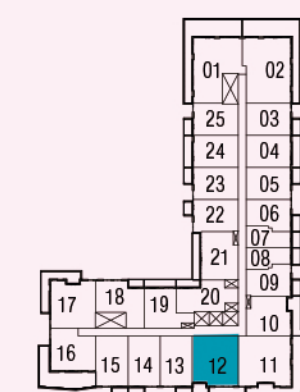
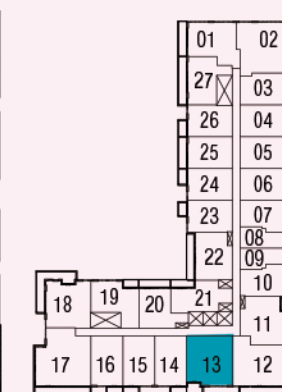
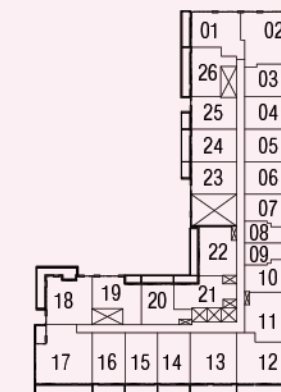
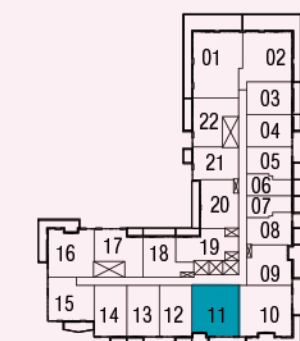
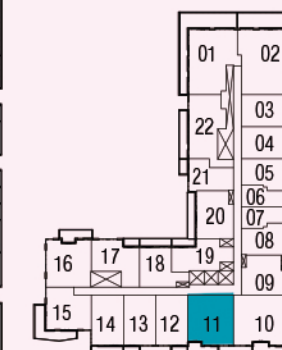
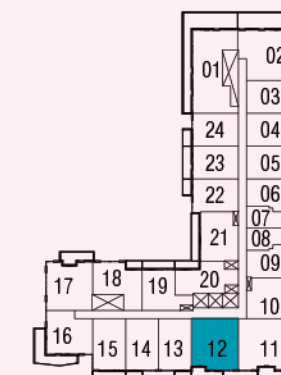
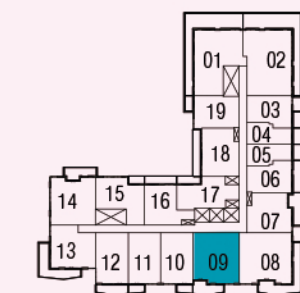
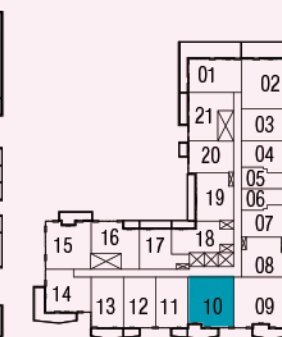
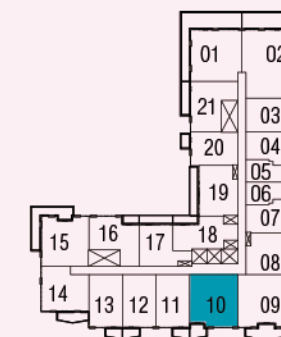
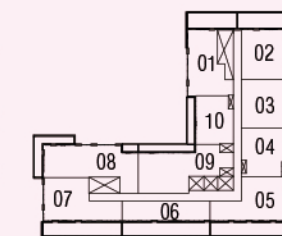
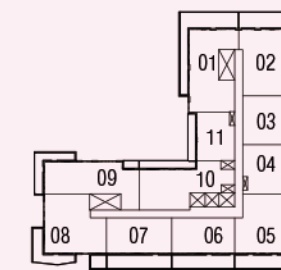
PRINCIPLE

SUITE | 932 FT² | FLOORS 3 TO 10 | SOUTH FACING



2 BEDROOMS, 2 BATHROOMS

Disclaimer: Dimensions, specifications, tile floor patterns and architectural detailing including window size and location) are approximated and subject to modifications without notice. Orientation of suite may be reversed, and purchaser agrees to accept the same. Actual useable floor space may vary from the stated floor area. Ceiling height measured from top to bottom floor slab to underside of the slab above before finishes and excluding bulkheads and required drop ceilings. Balcony/ terrace may vary slightly from unit to unit. Purchasers should see Schedule A to their Agreement of Purchase and Sale for unit specific details of balcony/ terrace. Suites subject to availability. All details should be confirmed with your representative. E & O.E. May 2024.

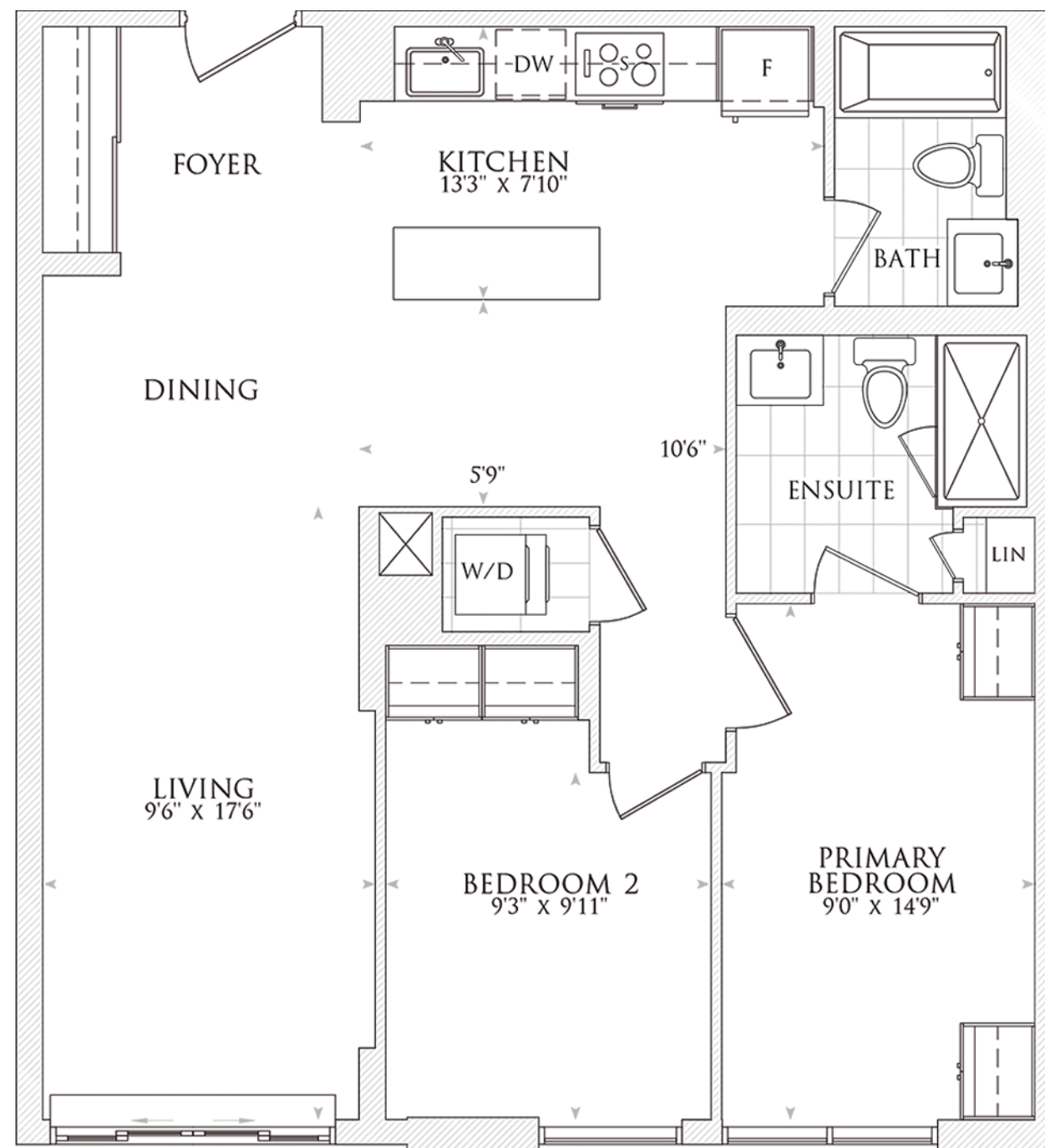


Note: For specific balcony dimensions please see **Floorplan Balcony Schedule.**



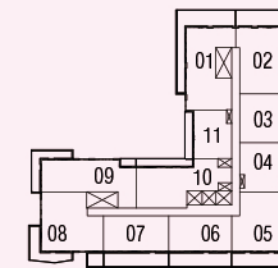
EXQUISITE

SUITE | 954 FT² | FLOOR 2 | SOUTH FACING

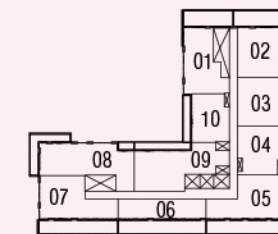


TERRACE UNIT, 2 BEDROOMS, 2 BATHROOMS

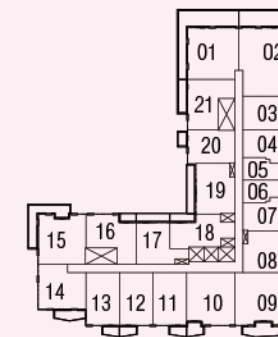
Disclaimer: Dimensions, specifications, tile floor patterns and architectural detailing including window size and location) are approximated and subject to modifications without notice. Orientation of suite may be reversed, and purchaser agrees to accept the same. Actual useable floor space may vary from the stated floor area. Ceiling height measured from top to bottom floor slab to underside of the slab above before finishes and excluding bulkheads and required drop ceilings. Balcony/ terrace may vary slightly from unit to unit. Purchasers should see Schedule A to their Agreement of Purchase and Sale for unit specific details of balcony/ terrace. Suites subject to availability. All details should be confirmed with your representative. E & O.E. May 2024.



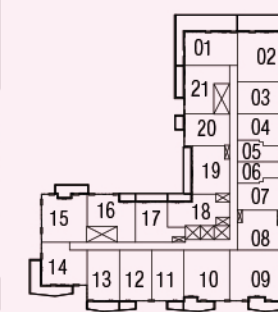
11th floor



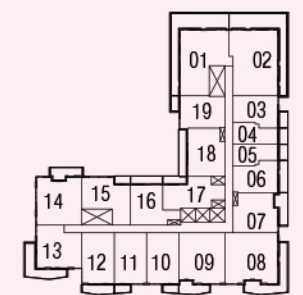
12th floor



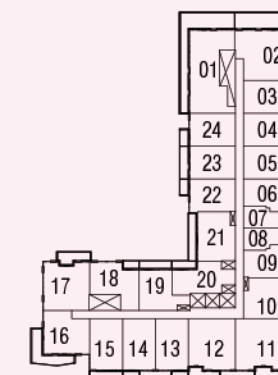
8th floor



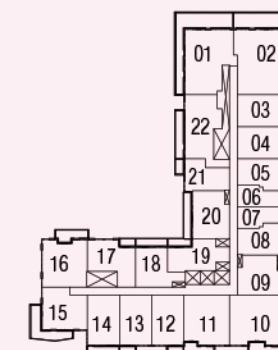
9th floor



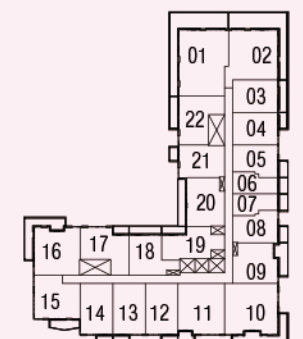
10th floor



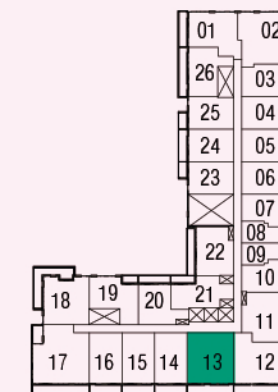
5th floor



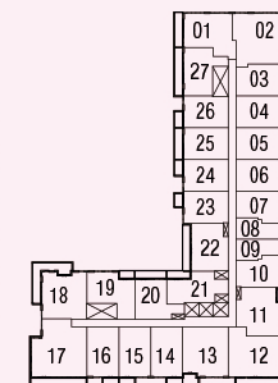
6th floor



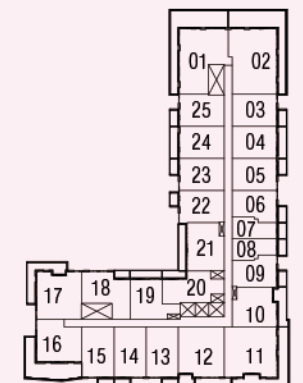
7th floor



2nd floor



3rd floor



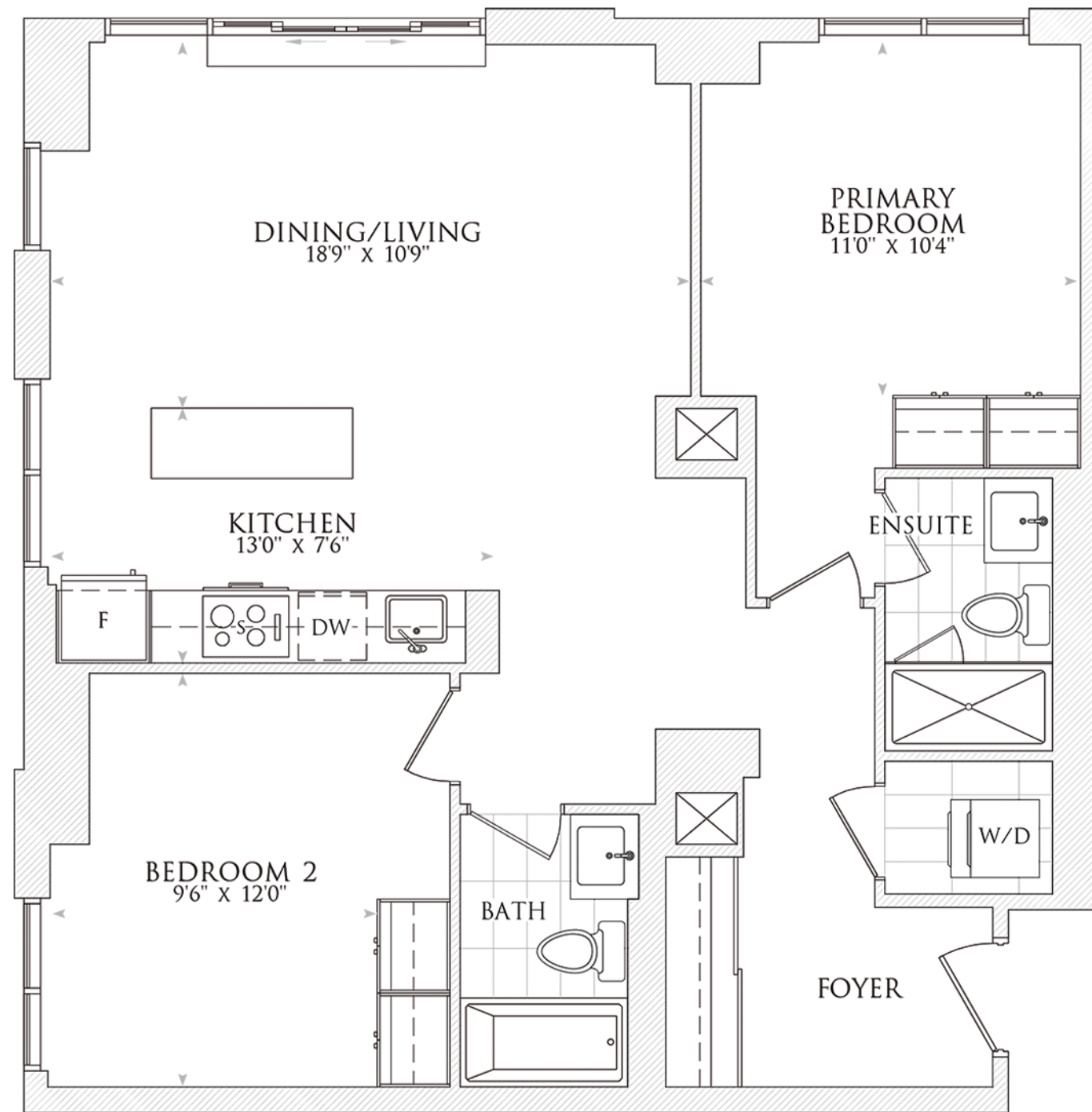
4th floor

Note: For specific balcony dimensions please see **Floorplan Balcony Schedule.**



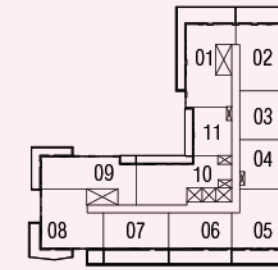
ESSENTIAL

SUITE | 1000 FT² | FLOOR 8 | NORTHEAST FACING

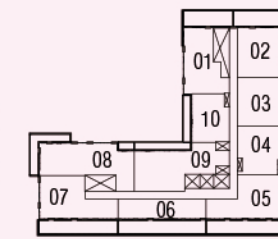


TERRACE UNIT, 2 BEDROOMS, 2 BATHROOMS

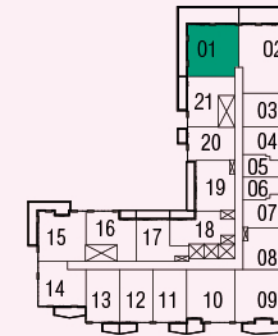
Disclaimer: Dimensions, specifications, tile floor patterns and architectural detailing including window size and location) are approximated and subject to modifications without notice. Orientation of suite may be reversed, and purchaser agrees to accept the same. Actual useable floor space may vary from the stated floor area. Ceiling height measured from top to bottom floor slab to underside of the slab above before finishes and excluding bulkheads and required drop ceilings. Balcony/ terrace may vary slightly from unit to unit. Purchasers should see Schedule A to their Agreement of Purchase and Sale for unit specific details of balcony/ terrace. Suites subject to availability. All details should be confirmed with your representative. E & O.E. May 2024.



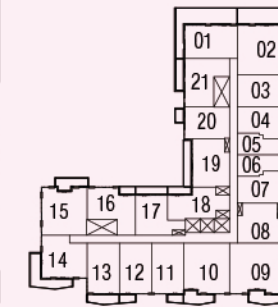
11th floor



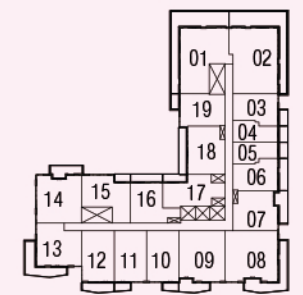
12th floor



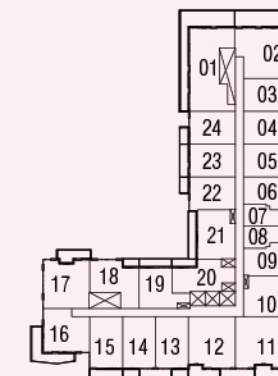
8th floor



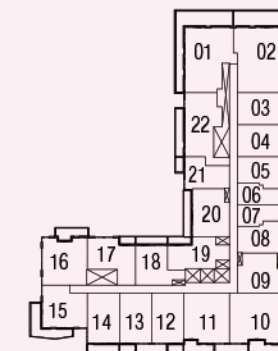
9th floor



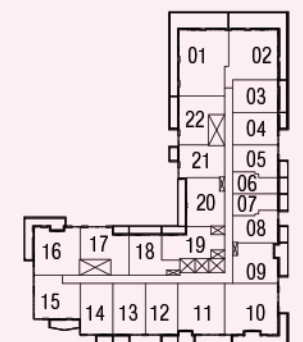
10th floor



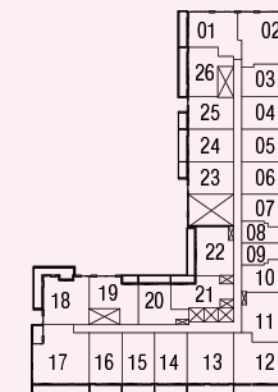
5th floor



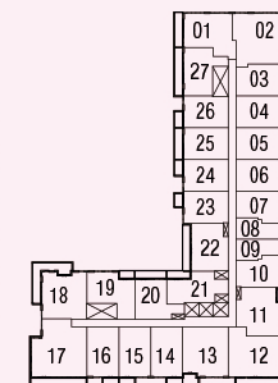
6th floor



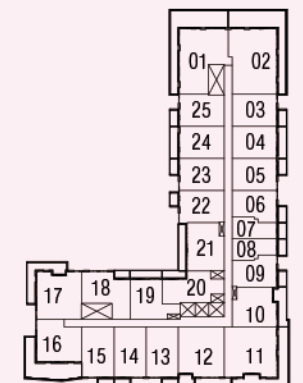
7th floor



2nd floor



3rd floor

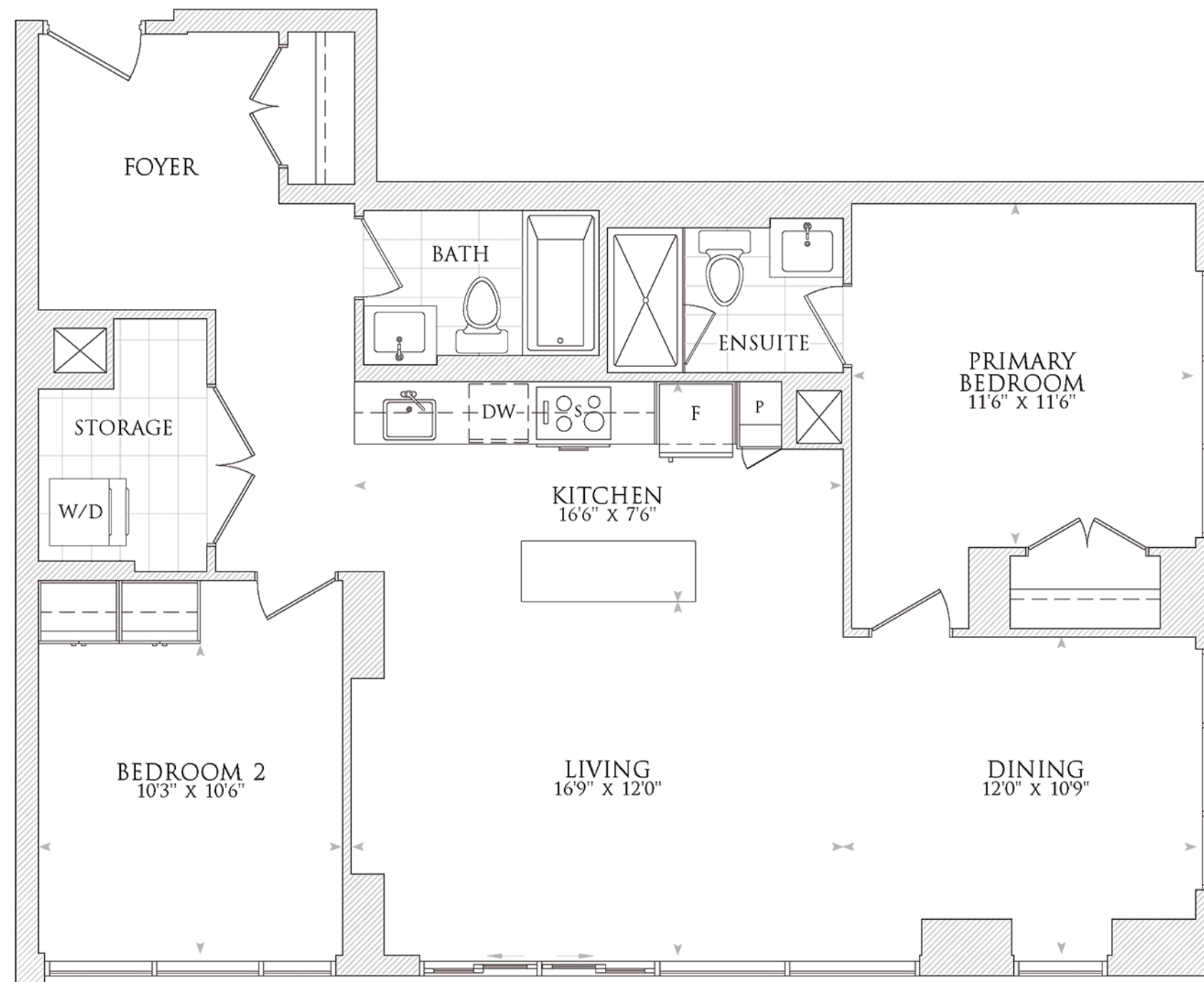


4th floor

Note: For specific balcony dimensions please see **Floorplan Balcony Schedule.**

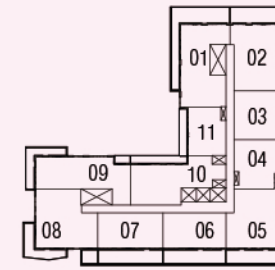
HALLMARK

SUITE | 1162 FT² | FLOORS 2 & 3 | SOUTHWEST FACING

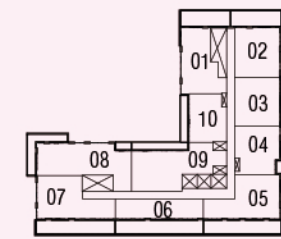


TERRACE UNIT, 2 BEDROOMS, 2 BATHROOMS

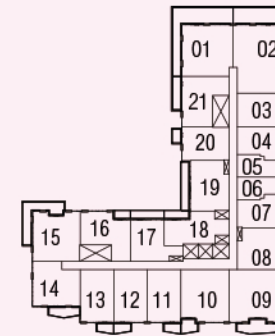
Disclaimer: Dimensions, specifications, tile floor patterns and architectural detailing including window size and location) are approximated and subject to modifications without notice. Orientation of suite may be reversed, and purchaser agrees to accept the same. Actual useable floor space may vary from the stated floor area. Ceiling height measured from top to bottom floor slab to underside of the slab above before finishes and excluding bulkheads and required drop ceilings. Balcony/ terrace may vary slightly from unit to unit. Purchasers should see Schedule A to their Agreement of Purchase and Sale for unit specific details of balcony/ terrace. Suites subject to availability. All details should be confirmed with your representative. E & O.E. May 2024.



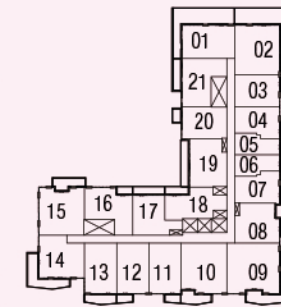
11th floor



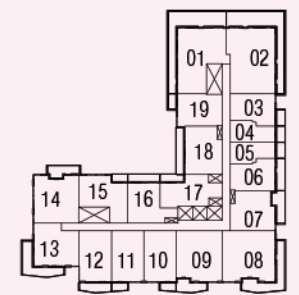
12th floor



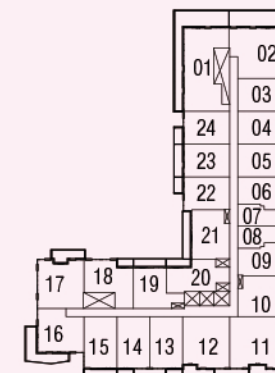
8th floor



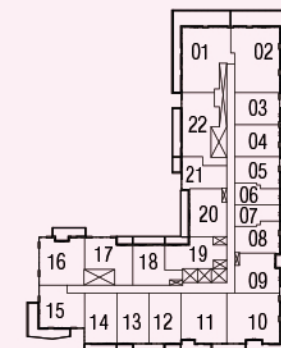
9th floor



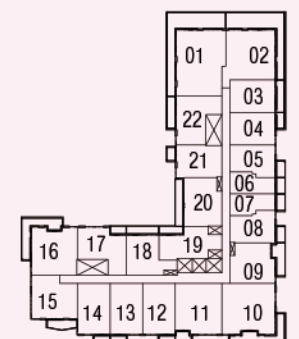
10th floor



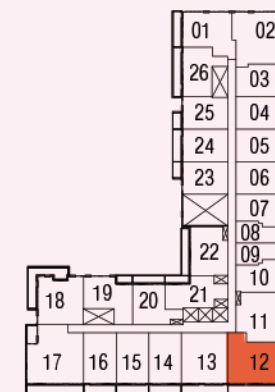
5th floor



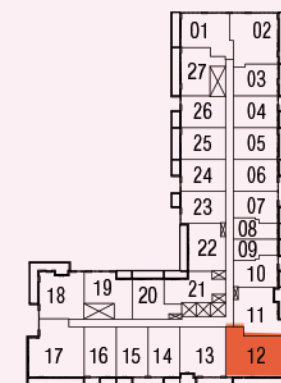
6th floor



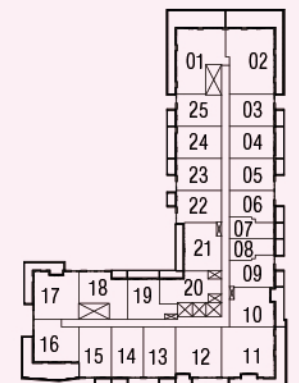
7th floor



2nd floor



3rd floor



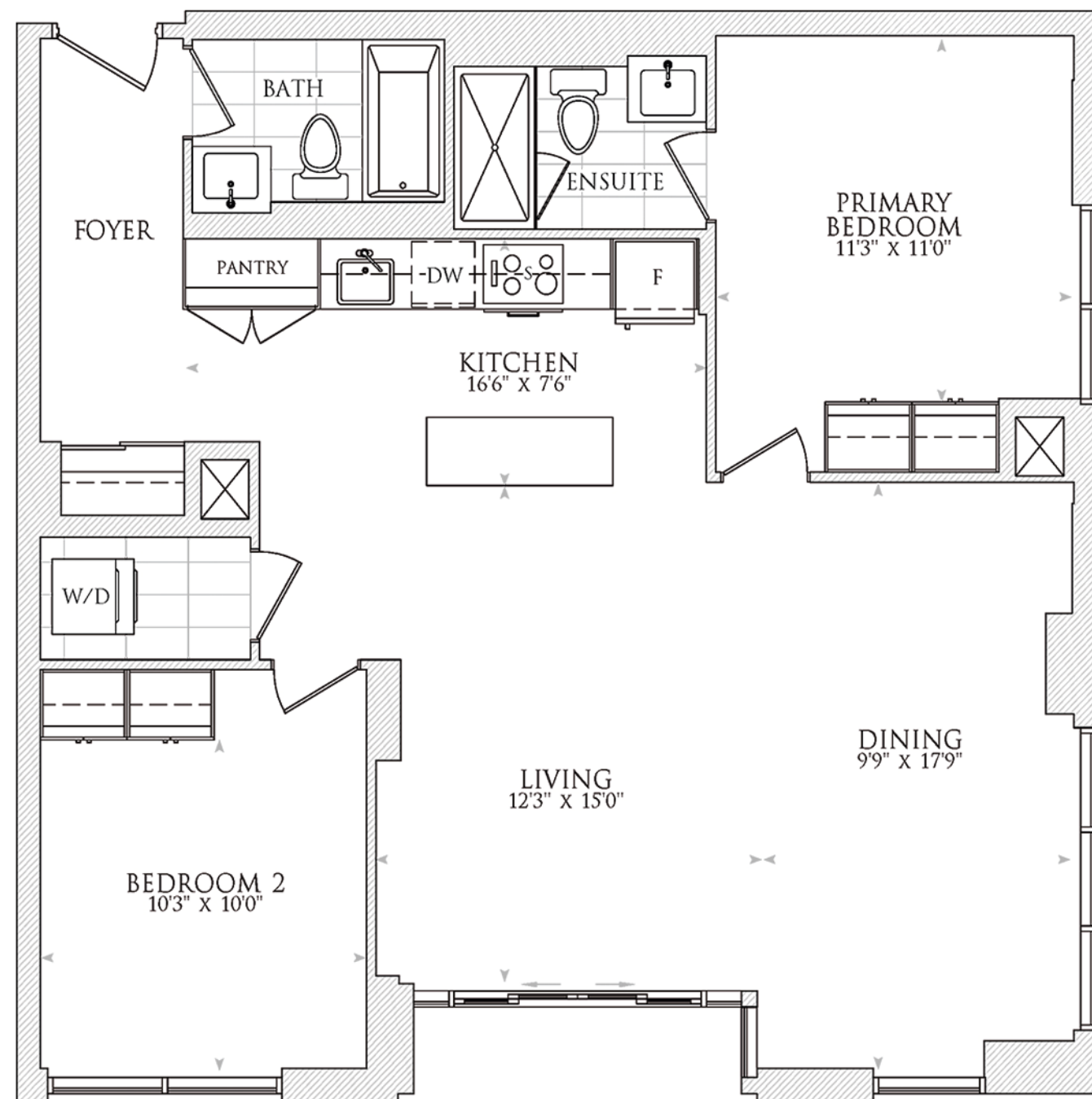
4th floor

Note: For specific balcony dimensions please see **Floorplan Balcony Schedule.**



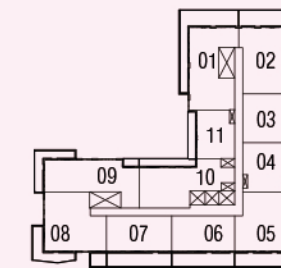
PARAMOUNT

SUITE | 1092 FT² | FLOORS 5 TO 10 | SOUTHEAST FACING

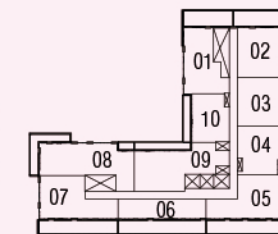


2 BEDROOMS, 2 BATHROOMS

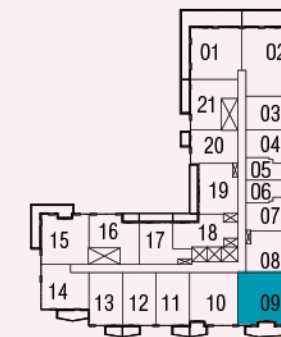
Disclaimer: Dimensions, specifications, tile floor patterns and architectural detailing including window size and location) are approximated and subject to modifications without notice. Orientation of suite may be reversed, and purchaser agrees to accept the same. Actual useable floor space may vary from the stated floor area. Ceiling height measured from top to bottom floor slab to underside of the slab above before finishes and excluding bulkheads and required drop ceilings. Balcony/ terrace may vary slightly from unit to unit. Purchasers should see Schedule A to their Agreement of Purchase and Sale for unit specific details of balcony/ terrace. Suites subject to availability. All details should be confirmed with your representative. E & O.E. May 2024.



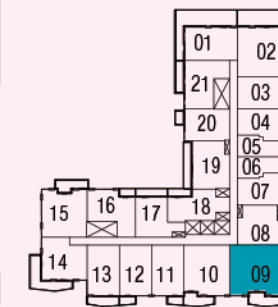
11th floor



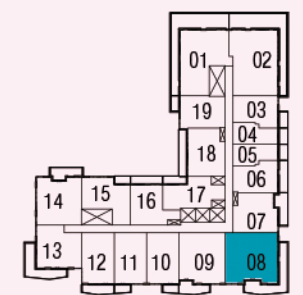
12th floor



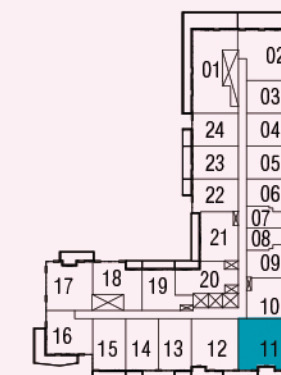
8th floor



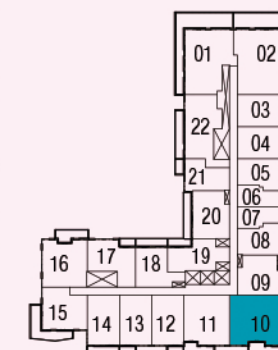
9th floor



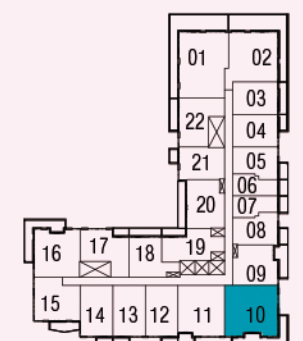
10th floor



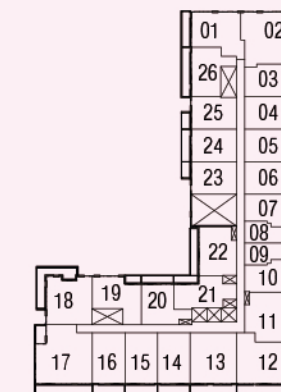
5th floor



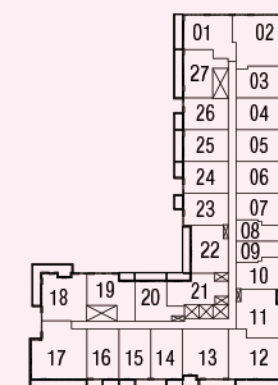
6th floor



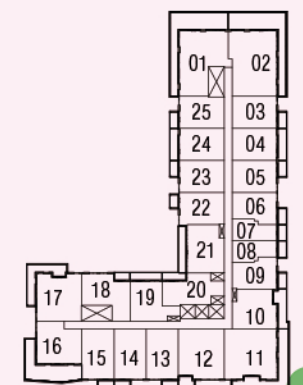
7th floor



2nd floor



3rd floor



4th floor

Note: For specific balcony dimensions please see **Floorplan Balcony Schedule.**

