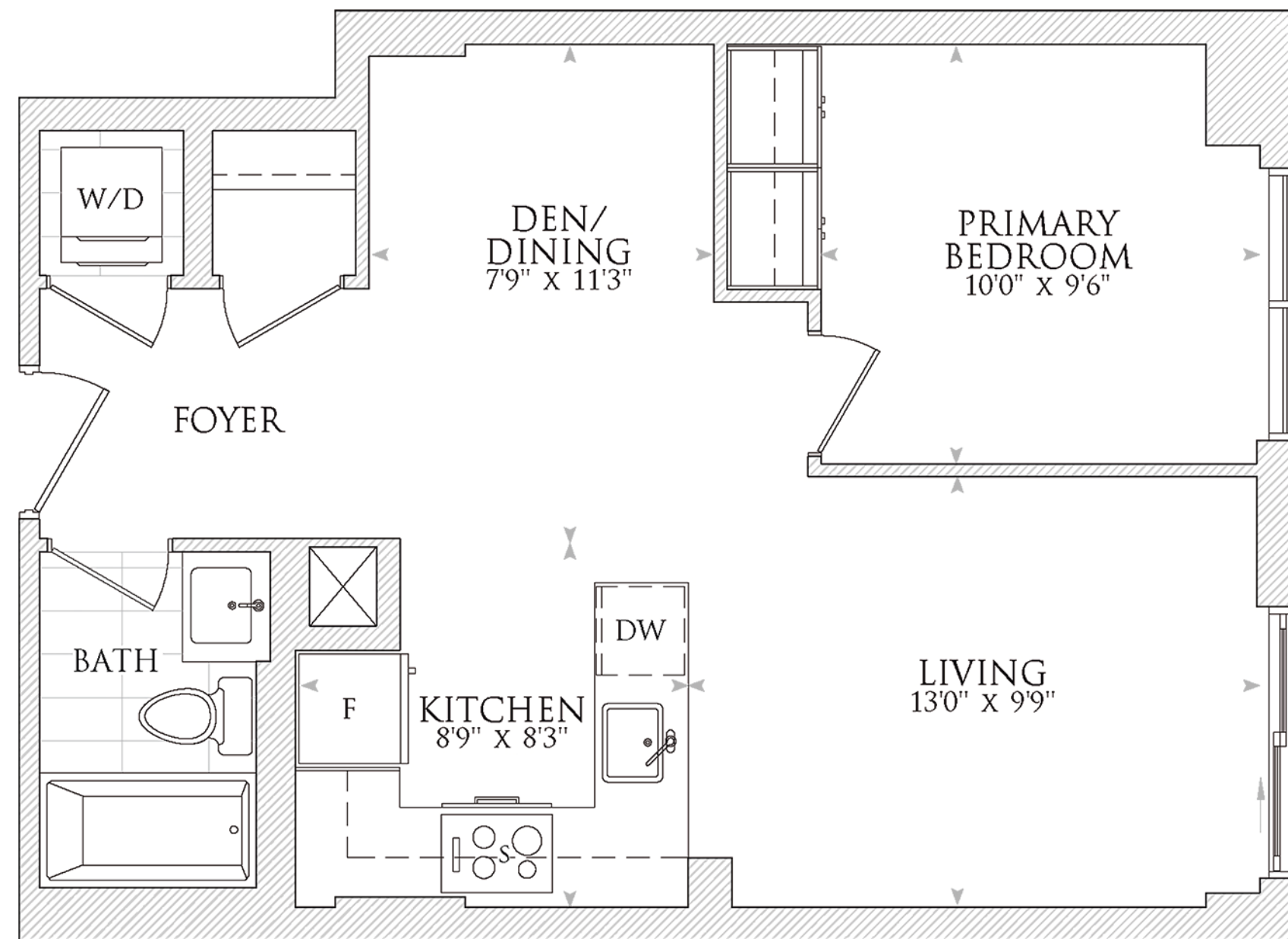


ACE

SUITE | 578 FT² | FLOORS 2 & 3 | EAST FACING

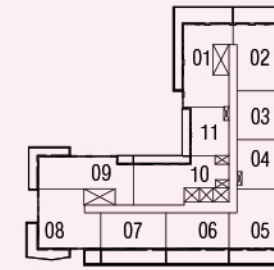


1 BEDROOM + DEN, 1 BATHROOM

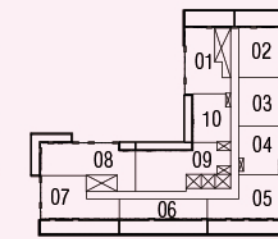
Disclaimer: Dimensions, specifications, tile floor patterns and architectural detailing including window size and location) are approximated and subject to modifications without notice. Orientation of suite may be reversed, and purchaser agrees to accept the same. Actual useable floor space may vary from the stated floor area. Ceiling height measured from top to bottom floor slab to underside of the slab above before finishes and excluding bulkheads and required drop ceilings. Balcony/ terrace may vary slightly from unit to unit. Purchasers should see Schedule A to their Agreement of Purchase and Sale for unit specific details of balcony/ terrace. Suites subject to availability. All details should be confirmed with your representative. E & O.E. May 2024.

PARADIGM | STONEY CREEK

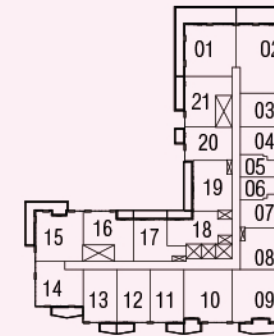
MOLINARO GROUP



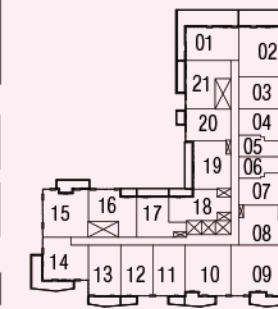
11th floor



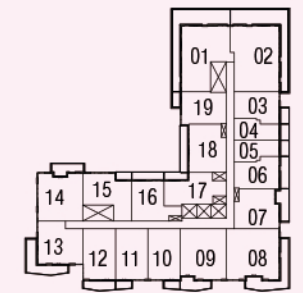
12th floor



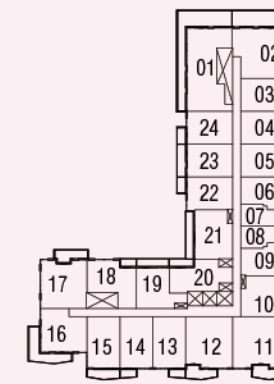
8th floor



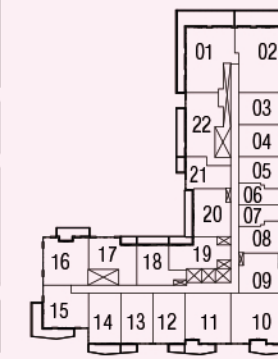
9th floor



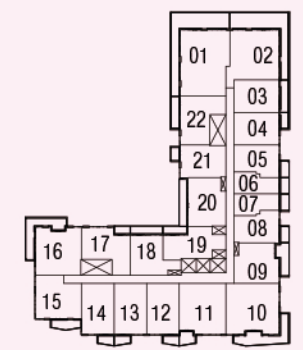
10th floor



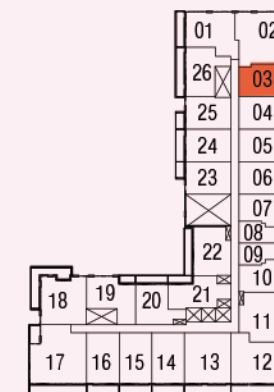
5th floor



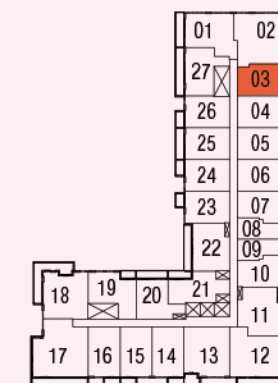
6th floor



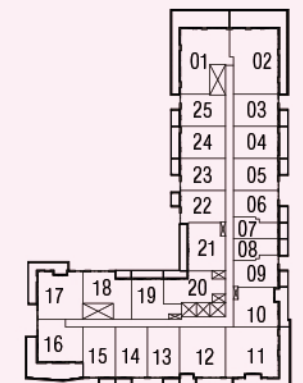
7th floor



2nd floor



3rd floor



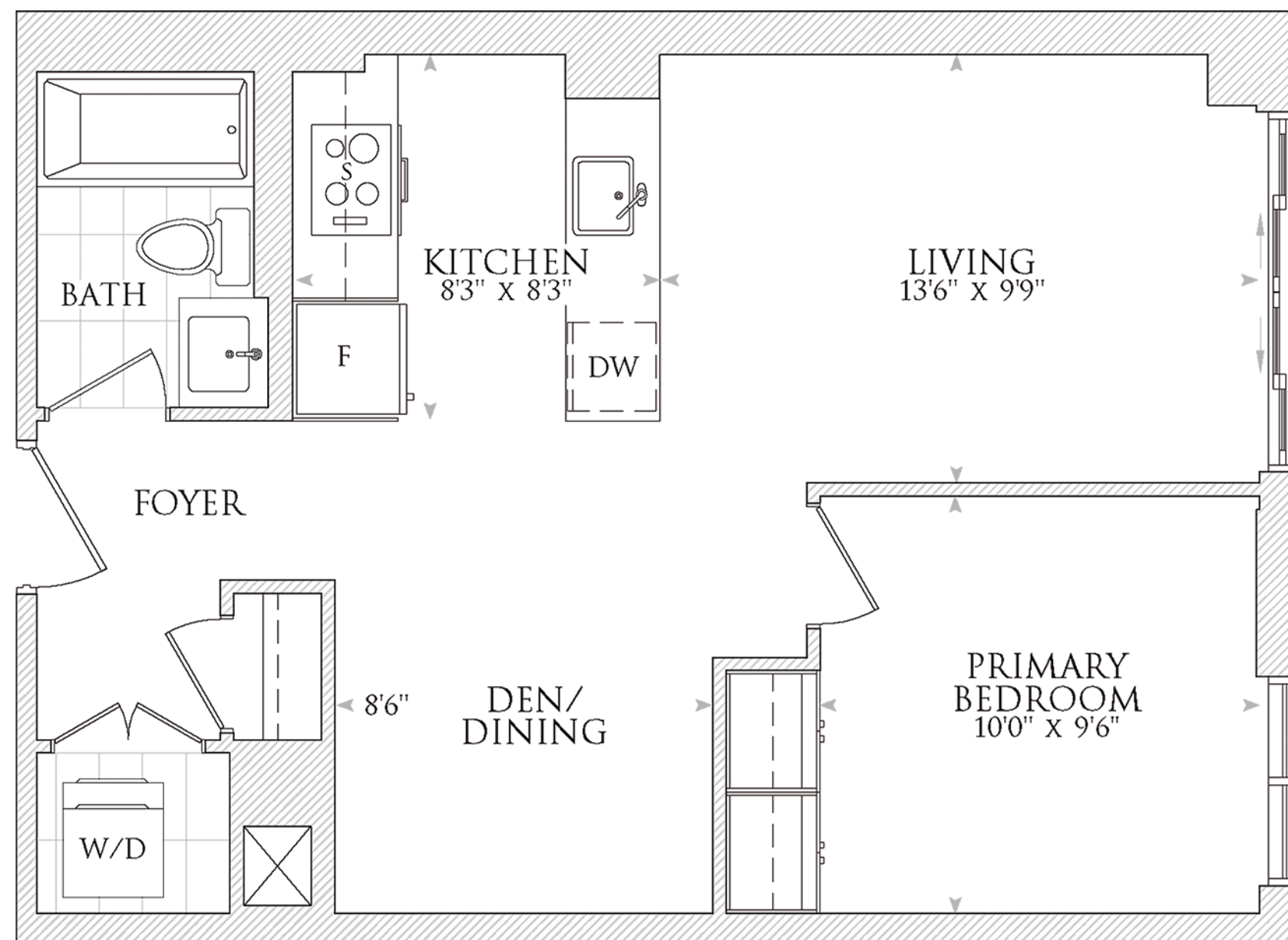
4th floor

Note: For specific balcony dimensions please see **Floorplan Balcony Schedule.**



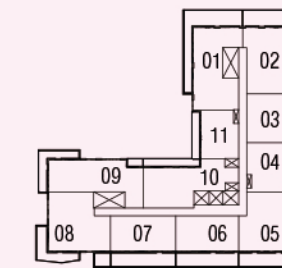
BENCHMARK

SUITE | 593 FT² | FLOORS 2 TO 10 | EAST & WEST FACING

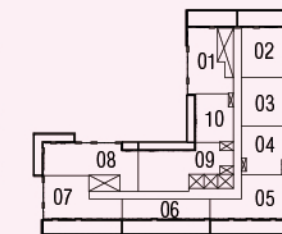


1 BEDROOM + DEN, 1 BATHROOM

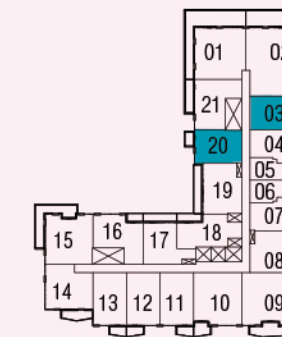
Disclaimer: Dimensions, specifications, tile floor patterns and architectural detailing including window size and location) are approximated and subject to modifications without notice. Orientation of suite may be reversed, and purchaser agrees to accept the same. Actual useable floor space may vary from the stated floor area. Ceiling height measured from top to bottom floor slab to underside of the slab above before finishes and excluding bulkheads and required drop ceilings. Balcony/ terrace may vary slightly from unit to unit. Purchasers should see Schedule A to their Agreement of Purchase and Sale for unit specific details of balcony/ terrace. Suites subject to availability. All details should be confirmed with your representative. E & O.E. May 2024.



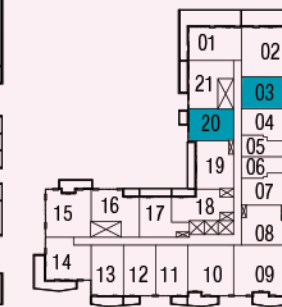
11th floor



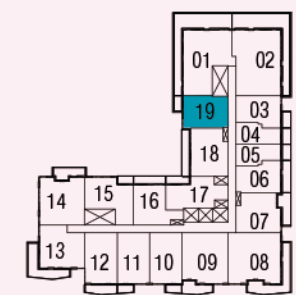
12th floor



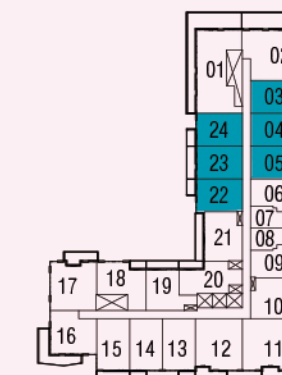
8th floor



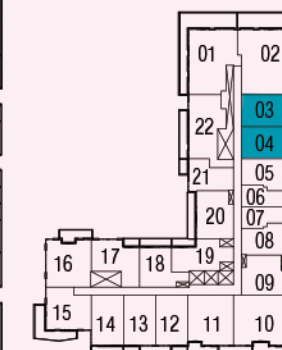
9th floor



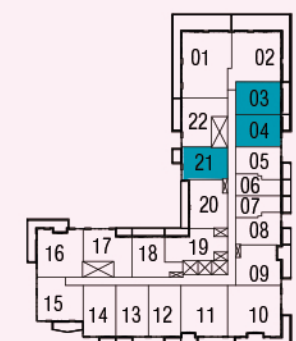
10th floor



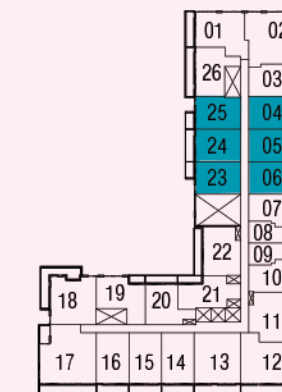
5th floor



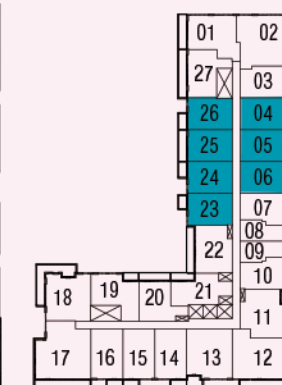
6th floor



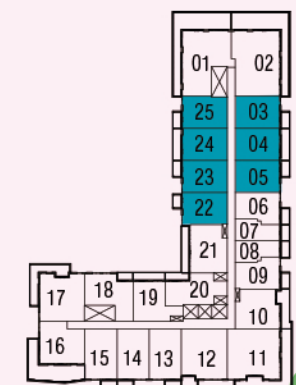
7th floor



2nd floor



3rd floor



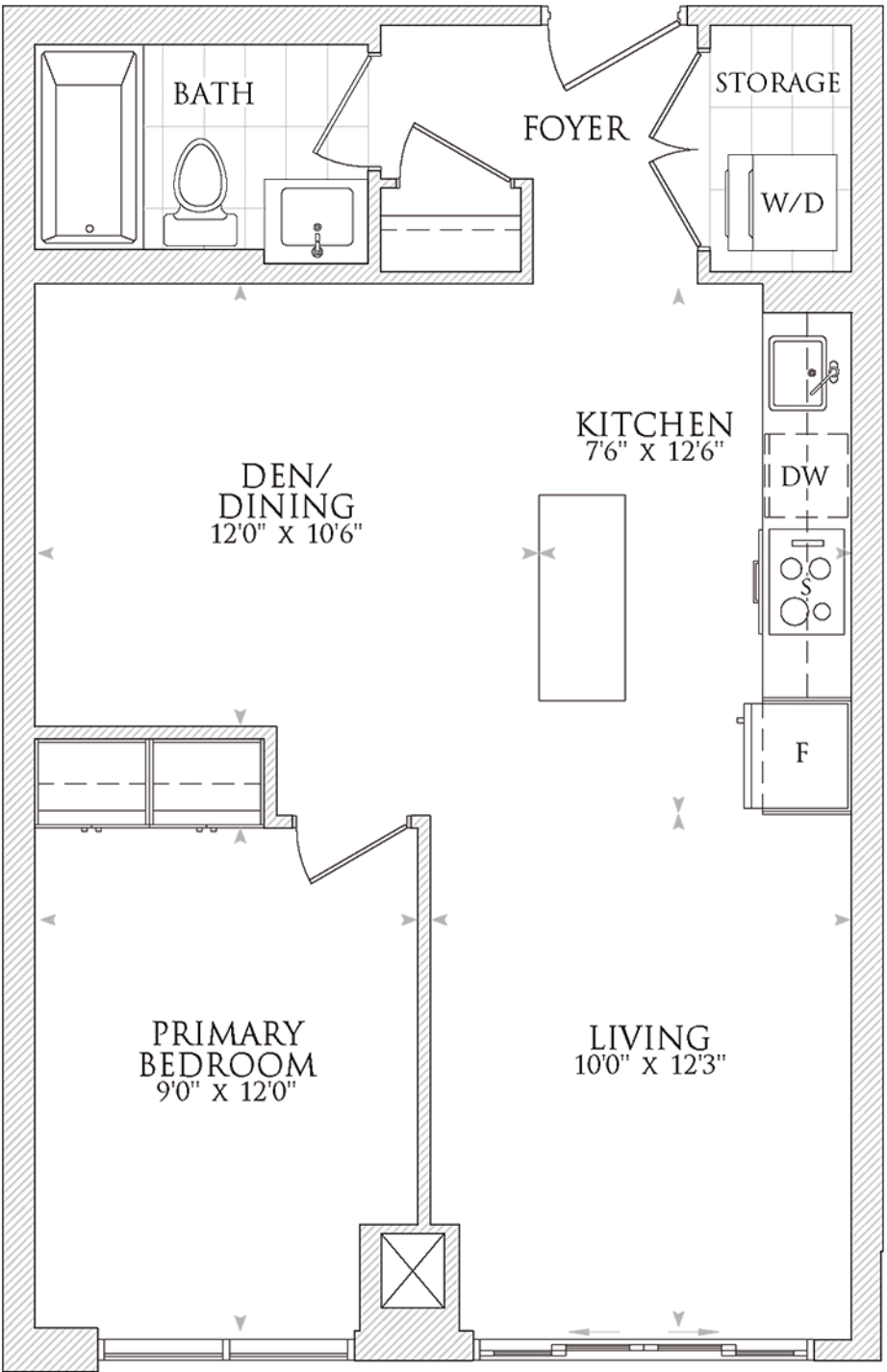
4th floor

Note: For specific balcony dimensions please see **Floorplan Balcony Schedule.**



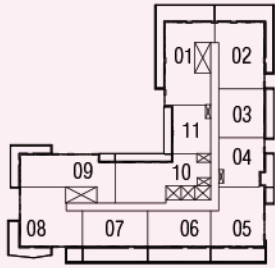
CORE

SUITE | 665 FT² | FLOORS 3 TO 10 | SOUTH FACING

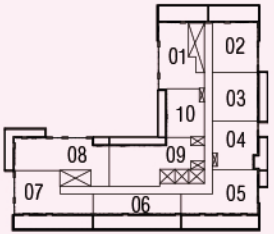


1 BEDROOM + DEN, 1 BATHROOM

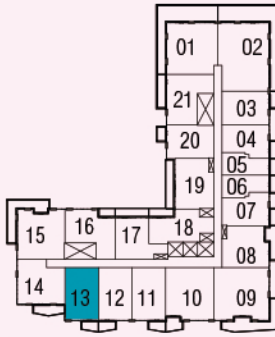
Disclaimer: Dimensions, specifications, tile floor patterns and architectural detailing including window size and location) are approximated and subject to modifications without notice. Orientation of suite may be reversed, and purchaser agrees to accept the same. Actual useable floor space may vary from the stated floor area. Ceiling height measured from top to bottom floor slab to underside of the slab above before finishes and excluding bulkheads and required drop ceilings. Balcony/ terrace may vary slightly from unit to unit. Purchasers should see Schedule A to their Agreement of Purchase and Sale for unit specific details of balcony/ terrace. Suites subject to availability. All details should be confirmed with your representative. E & O.E. May 2024.



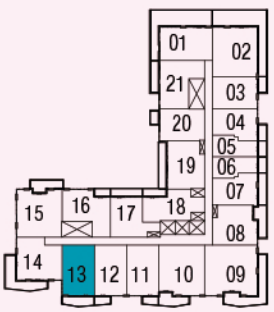
11th floor



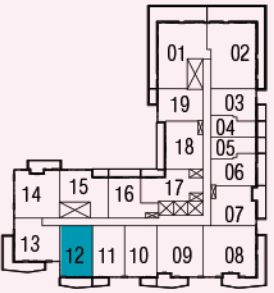
12th floor



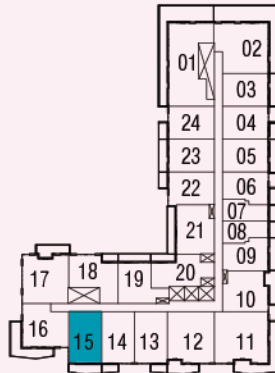
8th floor



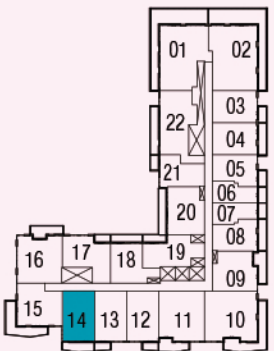
9th floor



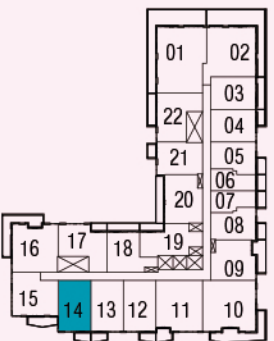
10th floor



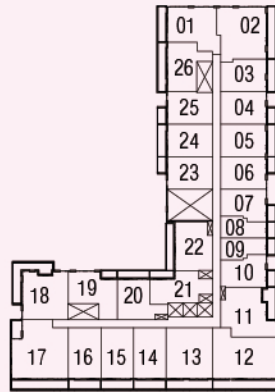
5th floor



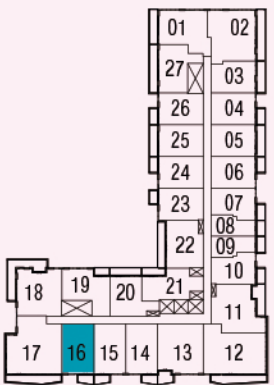
6th floor



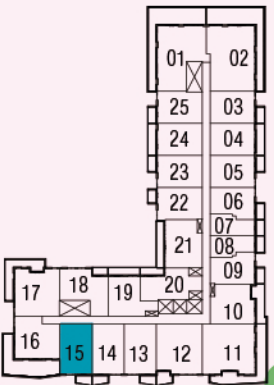
7th floor



2nd floor



3rd floor



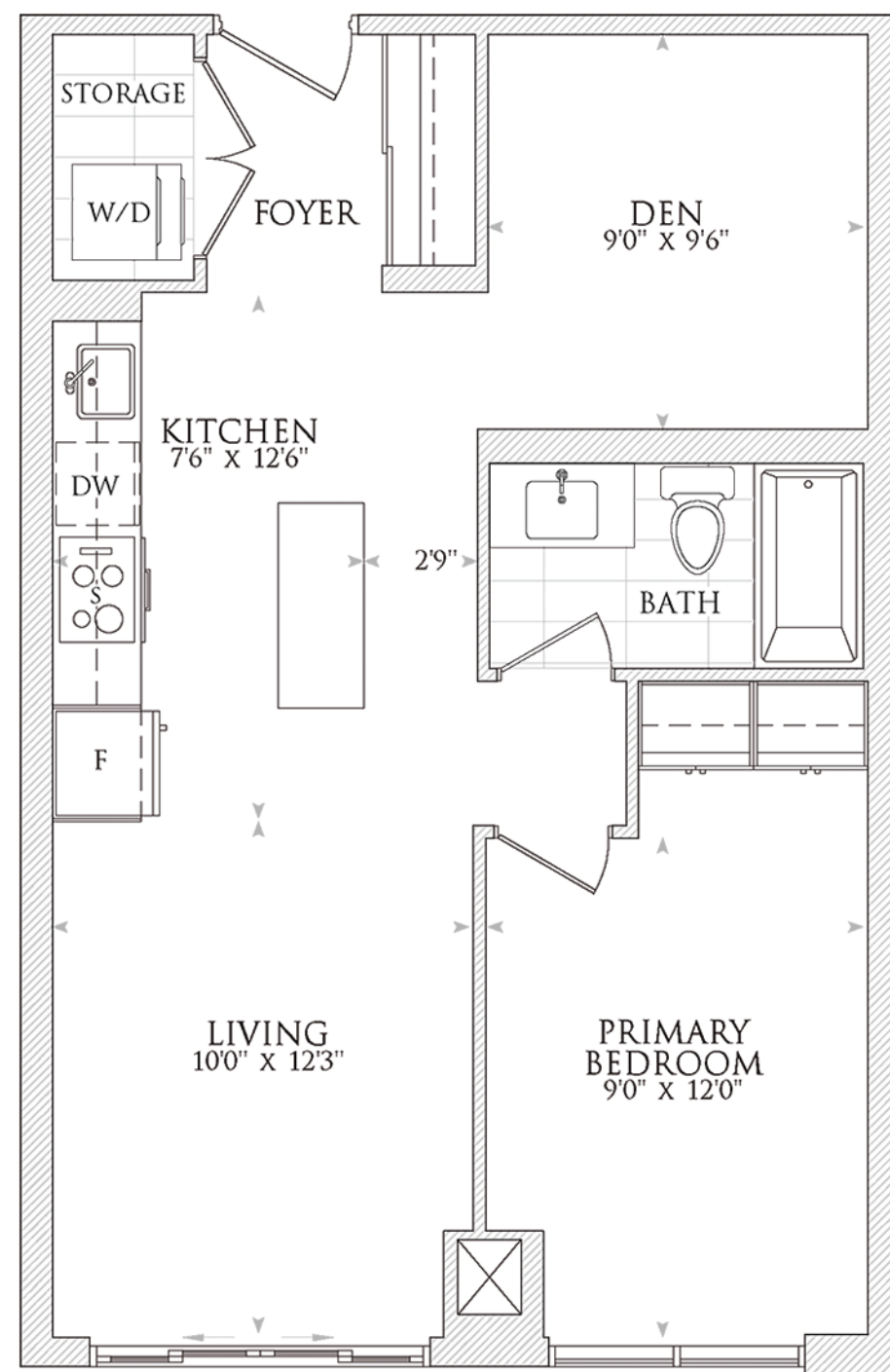
4th floor

Note: For specific balcony dimensions please see **Floorplan Balcony Schedule.**



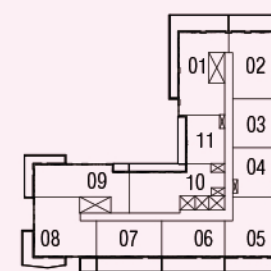
FUNDAMENTAL

SUITE | 665 FT² | FLOORS 2 TO 10 | SOUTH FACING

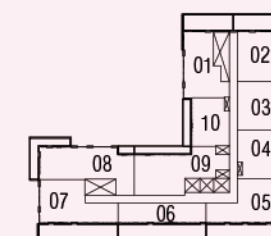


1 BEDROOM + DEN, 1 BATHROOM

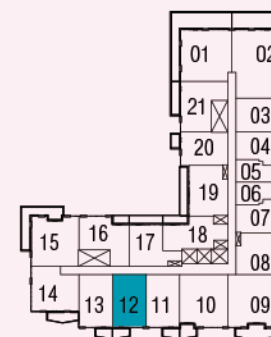
Disclaimer: Dimensions, specifications, tile floor patterns and architectural detailing including window size and location) are approximated and subject to modifications without notice. Orientation of suite may be reversed, and purchaser agrees to accept the same. Actual useable floor space may vary from the stated floor area. Ceiling height measured from top to bottom floor slab to underside of the slab above before finishes and excluding bulkheads and required drop ceilings. Balcony/ terrace may vary slightly from unit to unit. Purchasers should see Schedule A to their Agreement of Purchase and Sale for unit specific details of balcony/ terrace. Suites subject to availability. All details should be confirmed with your representative. E & O.E. May 2024.



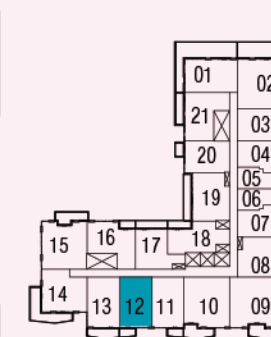
11th floor



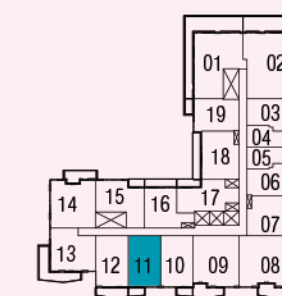
12th floor



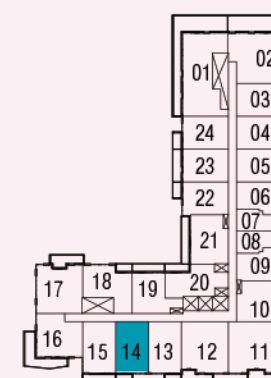
8th floor



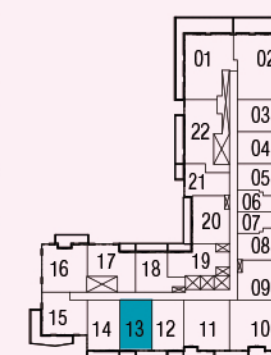
9th floor



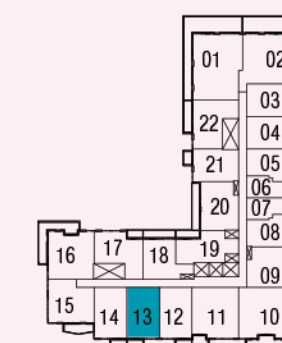
10th floor



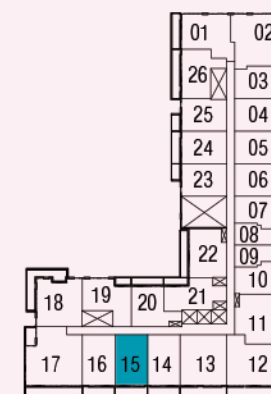
5th floor



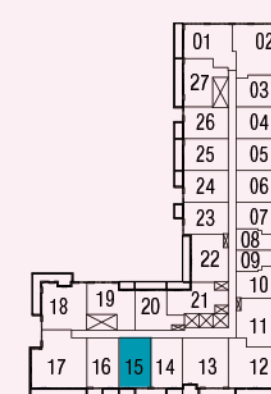
6th floor



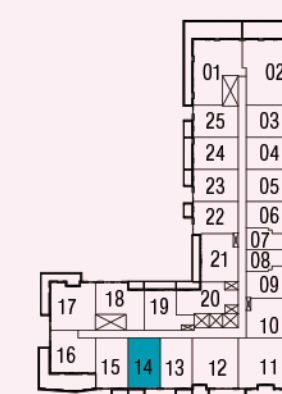
7th floor



2nd floor



3rd floor

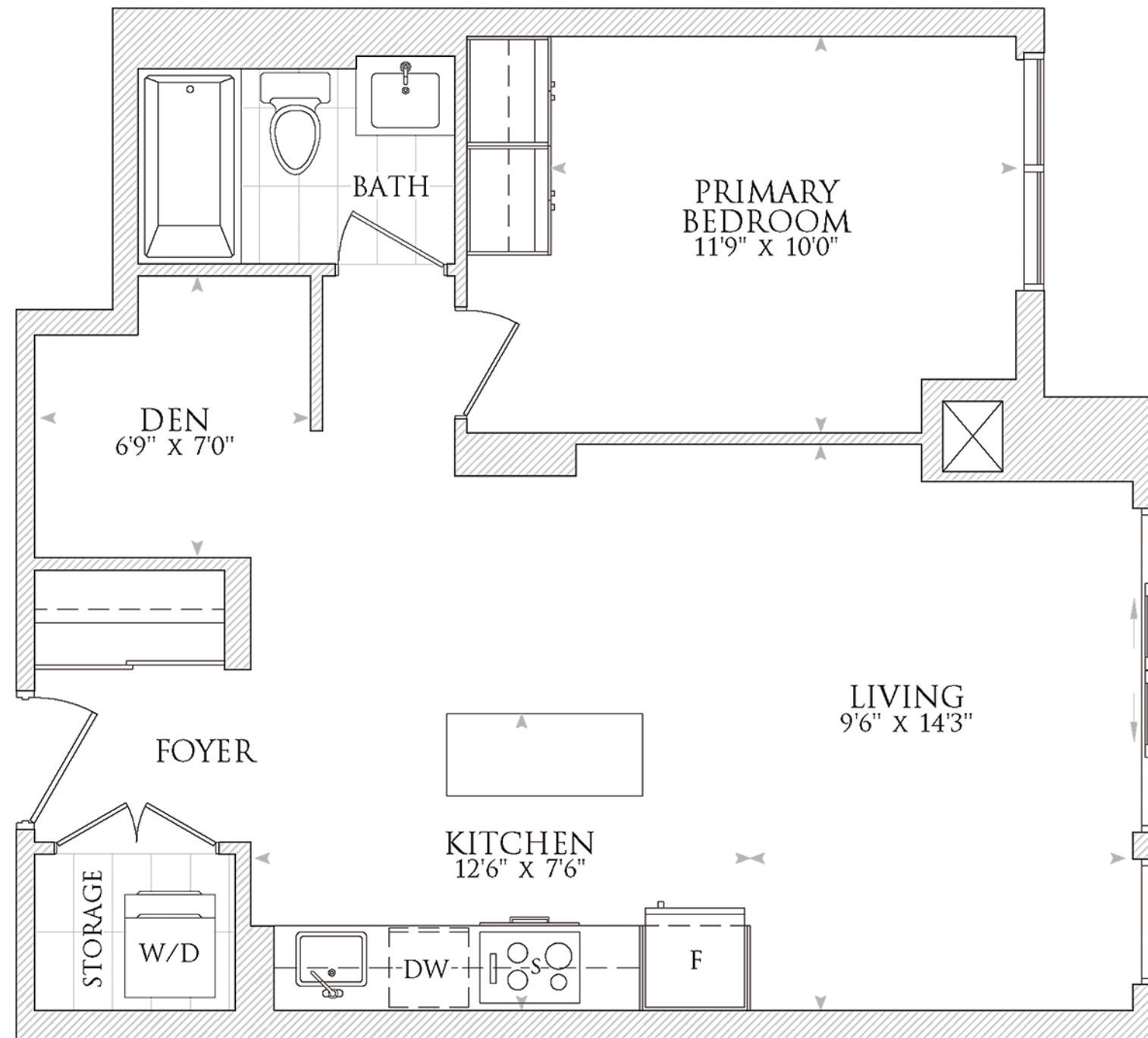


4th floor

Note: For specific balcony dimensions please see **Floorplan Balcony Schedule.**

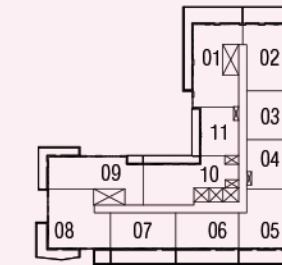
ELEMENT

SUITE | 693 FT² | FLOORS 4 TO 10 | EAST FACING

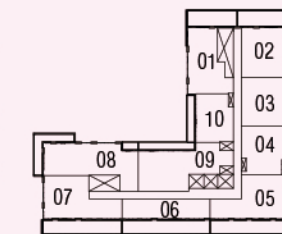


1 BEDROOM + DEN, 1 BATHROOM

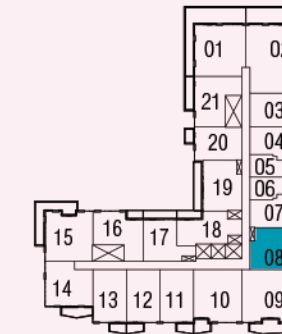
Disclaimer: Dimensions, specifications, tile floor patterns and architectural detailing including window size and location) are approximated and subject to modifications without notice. Orientation of suite may be reversed, and purchaser agrees to accept the same. Actual useable floor space may vary from the stated floor area. Ceiling height measured from top to bottom floor slab to underside of the slab above before finishes and excluding bulkheads and required drop ceilings. Balcony/ terrace may vary slightly from unit to unit. Purchasers should see Schedule A to their Agreement of Purchase and Sale for unit specific details of balcony/ terrace. Suites subject to availability. All details should be confirmed with your representative. E & O.E. May 2024.



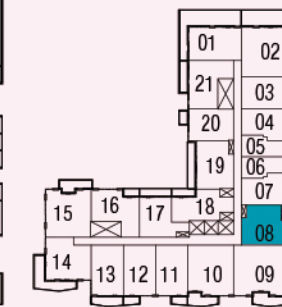
11th floor



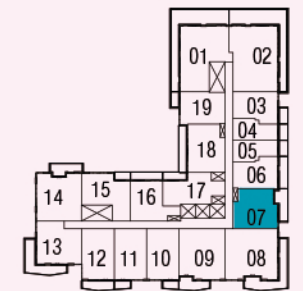
12th floor



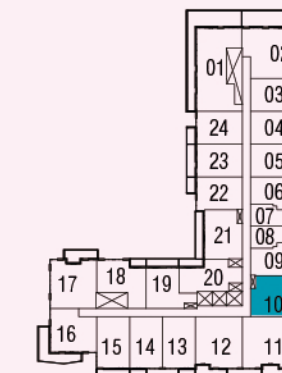
8th floor



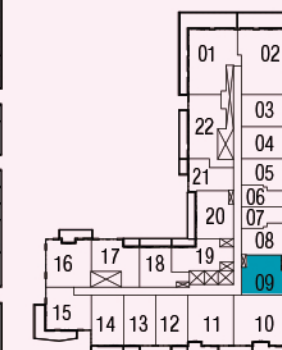
9th floor



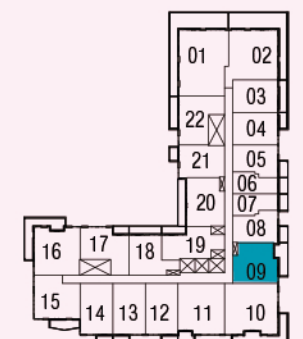
10th floor



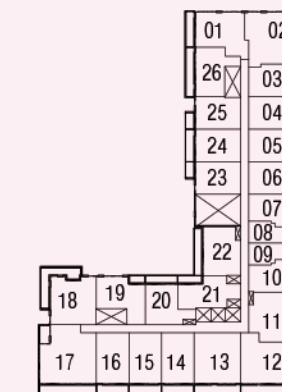
5th floor



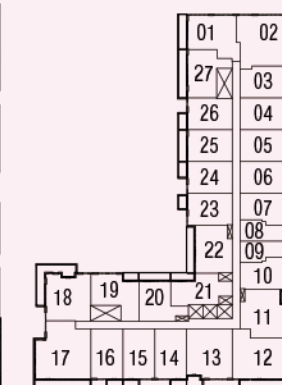
6th floor



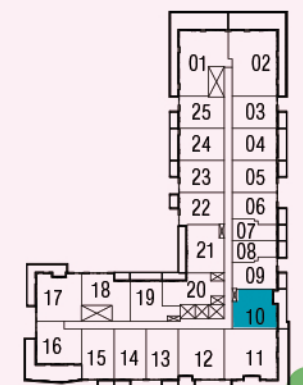
7th floor



2nd floor



3rd floor



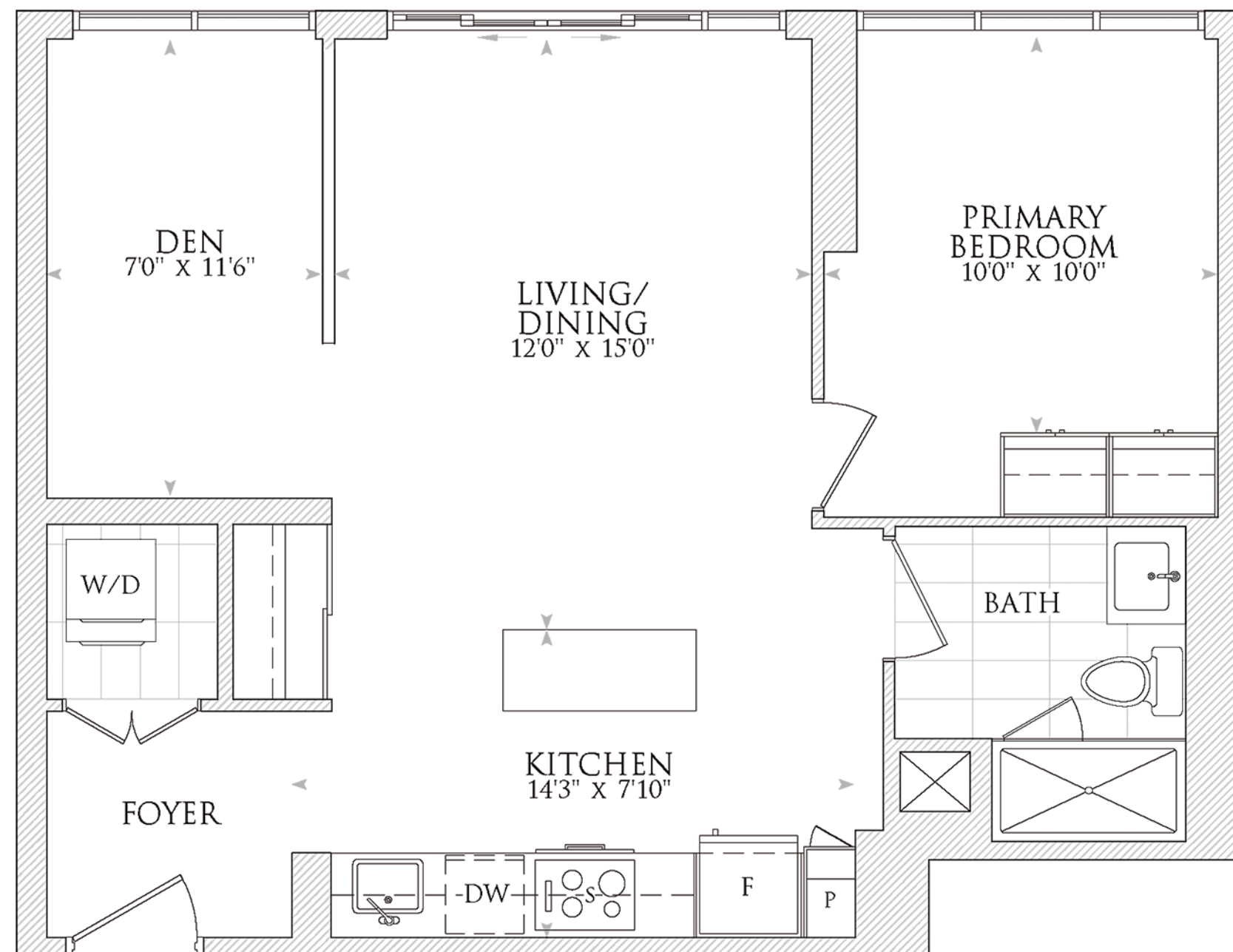
4th floor

Note: For specific balcony dimensions please see **Floorplan Balcony Schedule.**



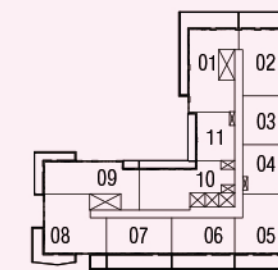
KEY

SUITE | 720 FT² | FLOORS 2 TO 10 | WEST FACING

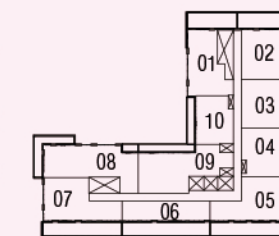


1 BEDROOM + DEN, 1 BATHROOM

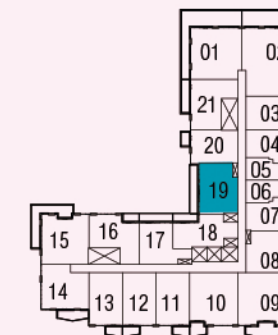
Disclaimer: Dimensions, specifications, tile floor patterns and architectural detailing including window size and location) are approximated and subject to modifications without notice. Orientation of suite may be reversed, and purchaser agrees to accept the same. Actual useable floor space may vary from the stated floor area. Ceiling height measured from top to bottom floor slab to underside of the slab above before finishes and excluding bulkheads and required drop ceilings. Balcony/ terrace may vary slightly from unit to unit. Purchasers should see Schedule A to their Agreement of Purchase and Sale for unit specific details of balcony/ terrace. Suites subject to availability. All details should be confirmed with your representative. E & O.E. May 2024.



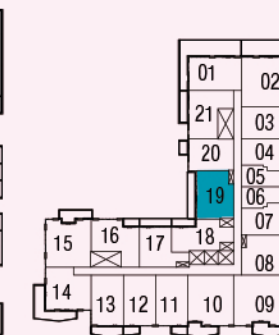
11th floor



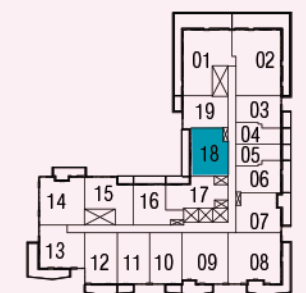
12th floor



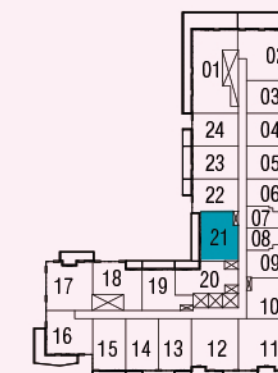
8th floor



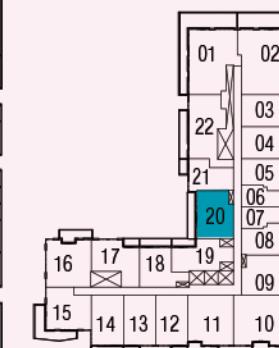
9th floor



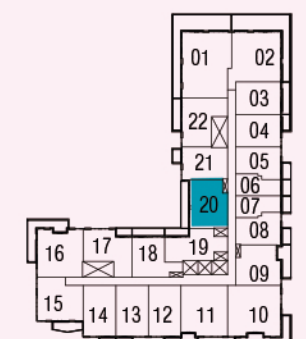
10th floor



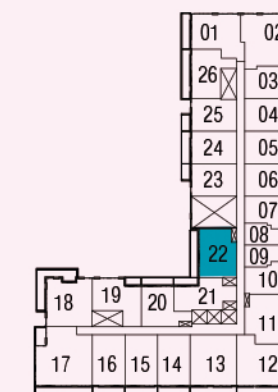
5th floor



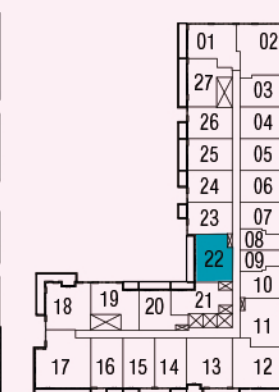
6th floor



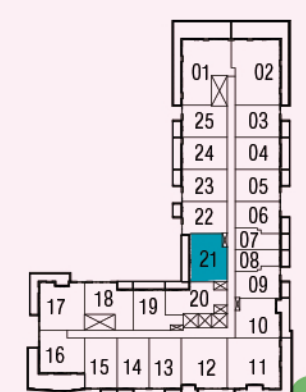
7th floor



2nd floor



3rd floor



4th floor

Note: For specific balcony dimensions please see **Floorplan Balcony Schedule.**

