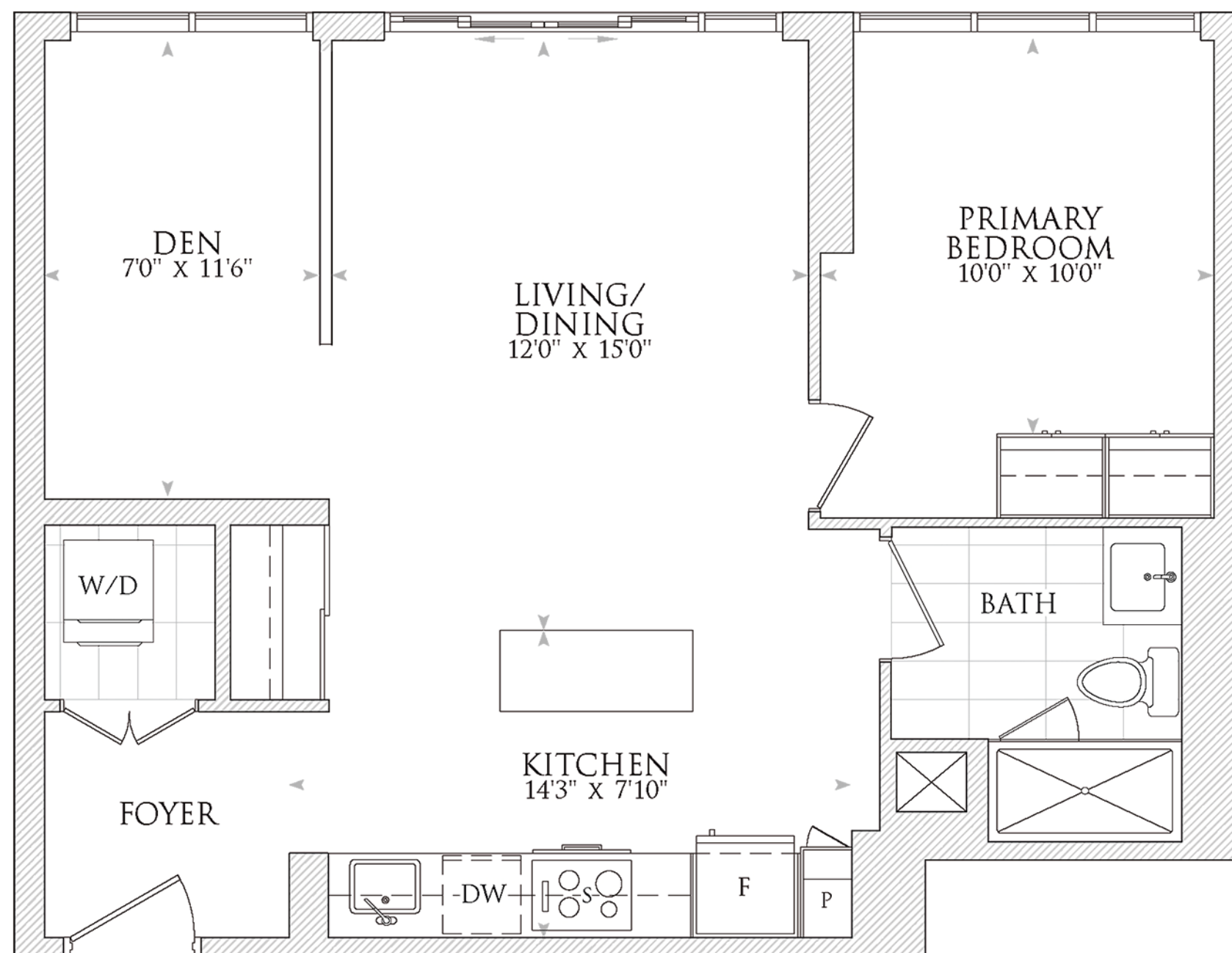


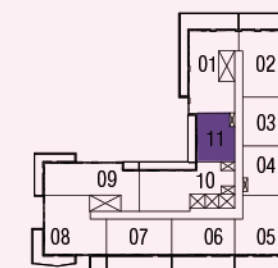
# KEY

SUITE | 720 FT<sup>2</sup> | FLOORS 11 & 12 | WEST FACING

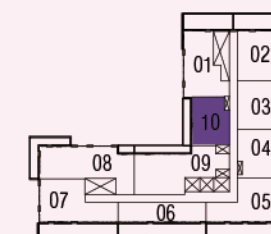


**1 BEDROOM + DEN, 1 BATHROOM**

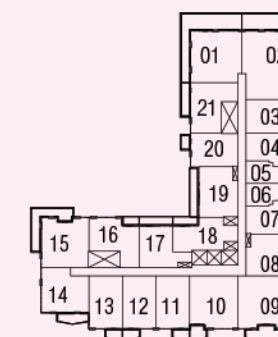
Disclaimer: Dimensions, specifications, tile floor patterns and architectural detailing including window size and location) are approximated and subject to modifications without notice. Orientation of suite may be reversed, and purchaser agrees to accept the same. Actual useable floor space may vary from the stated floor area. Ceiling height measured from top to bottom floor slab to underside of the slab above before finishes and excluding bulkheads and required drop ceilings. Balcony/ terrace may vary slightly from unit to unit. Purchasers should see Schedule A to their Agreement of Purchase and Sale for unit specific details of balcony/ terrace. Suites subject to availability. All details should be confirmed with your representative. E & O.E. May 2024.



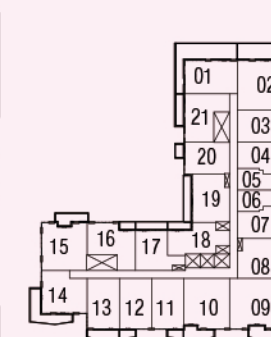
11th floor



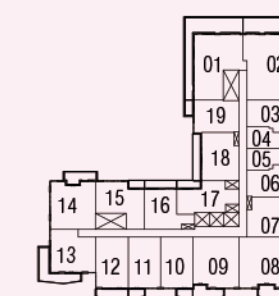
12th floor



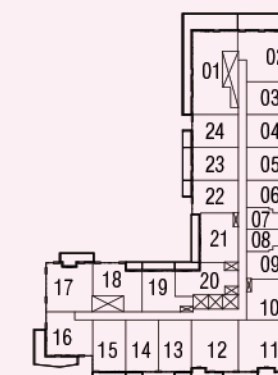
8th floor



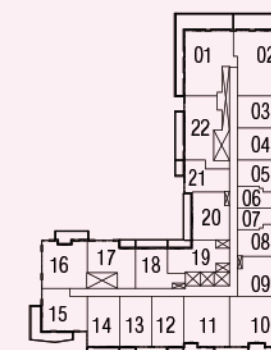
9th floor



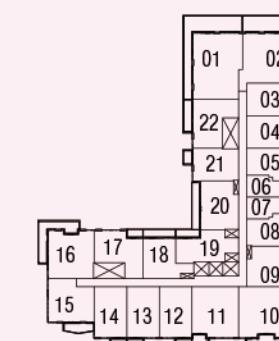
10th floor



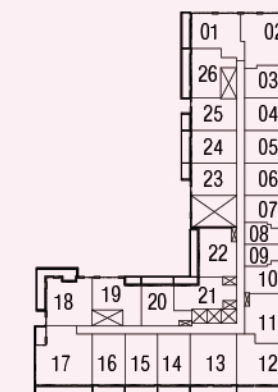
5th floor



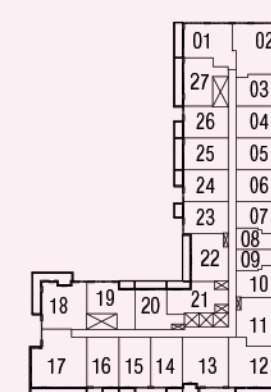
6th floor



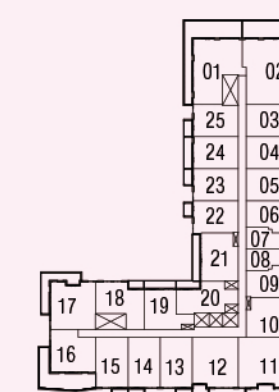
7th floor



2nd floor



3rd floor



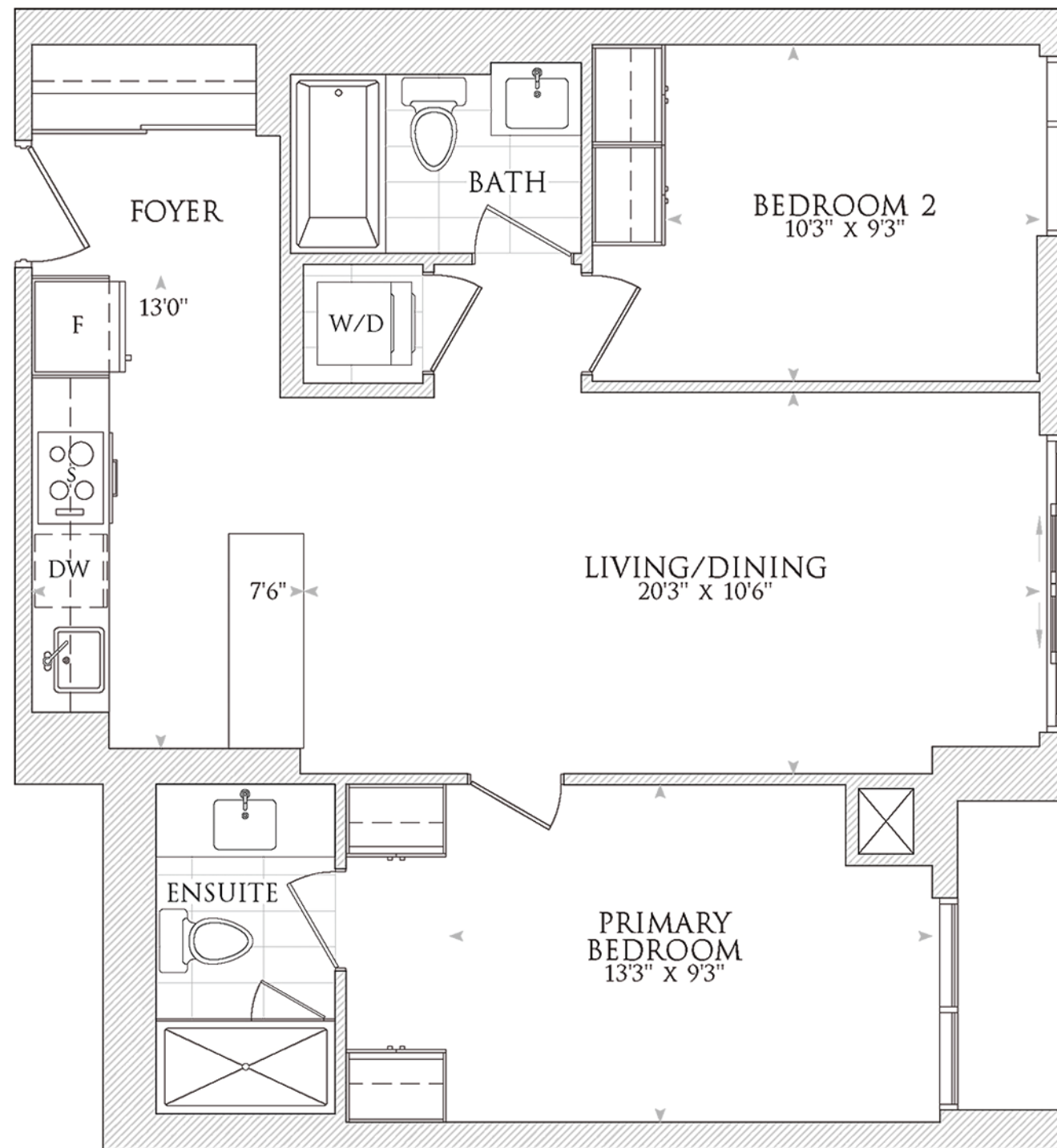
4th floor

**Note:** For specific balcony dimensions please see **Floorplan Balcony Schedule.**



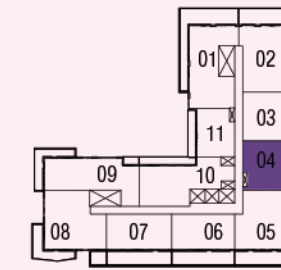
# ACCOLADE

**SUITE | 840 FT<sup>2</sup> | FLOORS 11 & 12 | EAST FACING**

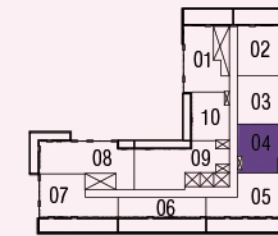


**2 BEDROOMS, 2 BATHROOMS**

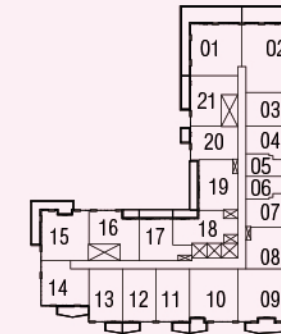
Disclaimer: Dimensions, specifications, tile floor patterns and architectural detailing including window size and location) are approximated and subject to modifications without notice. Orientation of suite may be reversed, and purchaser agrees to accept the same. Actual useable floor space may vary from the stated floor area. Ceiling height measured from top to bottom floor slab to underside of the slab above before finishes and excluding bulkheads and required drop ceilings. Balcony/ terrace may vary slightly from unit to unit. Purchasers should see Schedule A to their Agreement of Purchase and Sale for unit specific details of balcony/ terrace. Suites subject to availability. All details should be confirmed with your representative. E & O.E. May 2024.



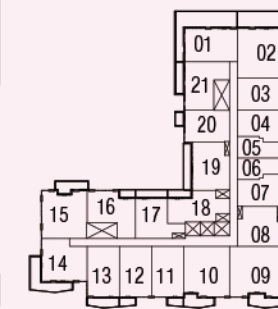
11th floor



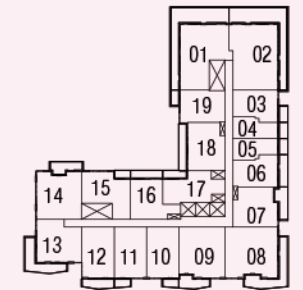
12th floor



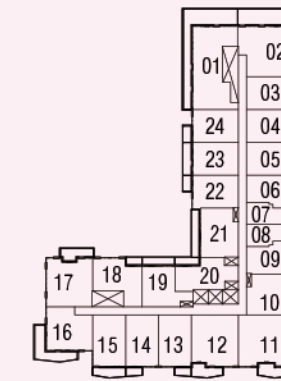
8th floor



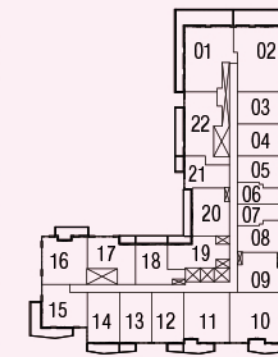
9th floor



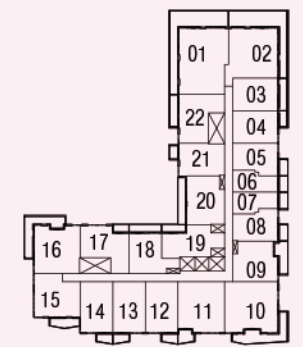
10th floor



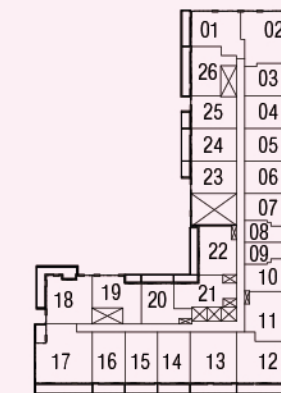
5th floor



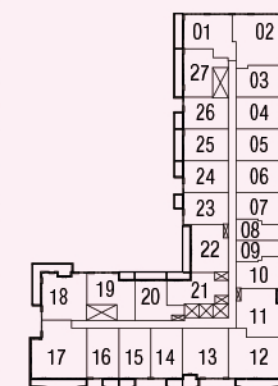
6th floor



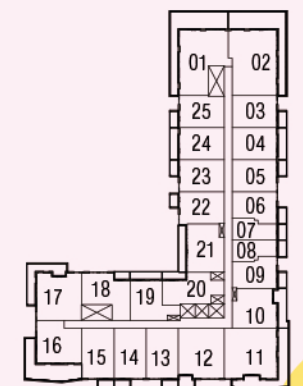
7th floor



2nd floor



3rd floor



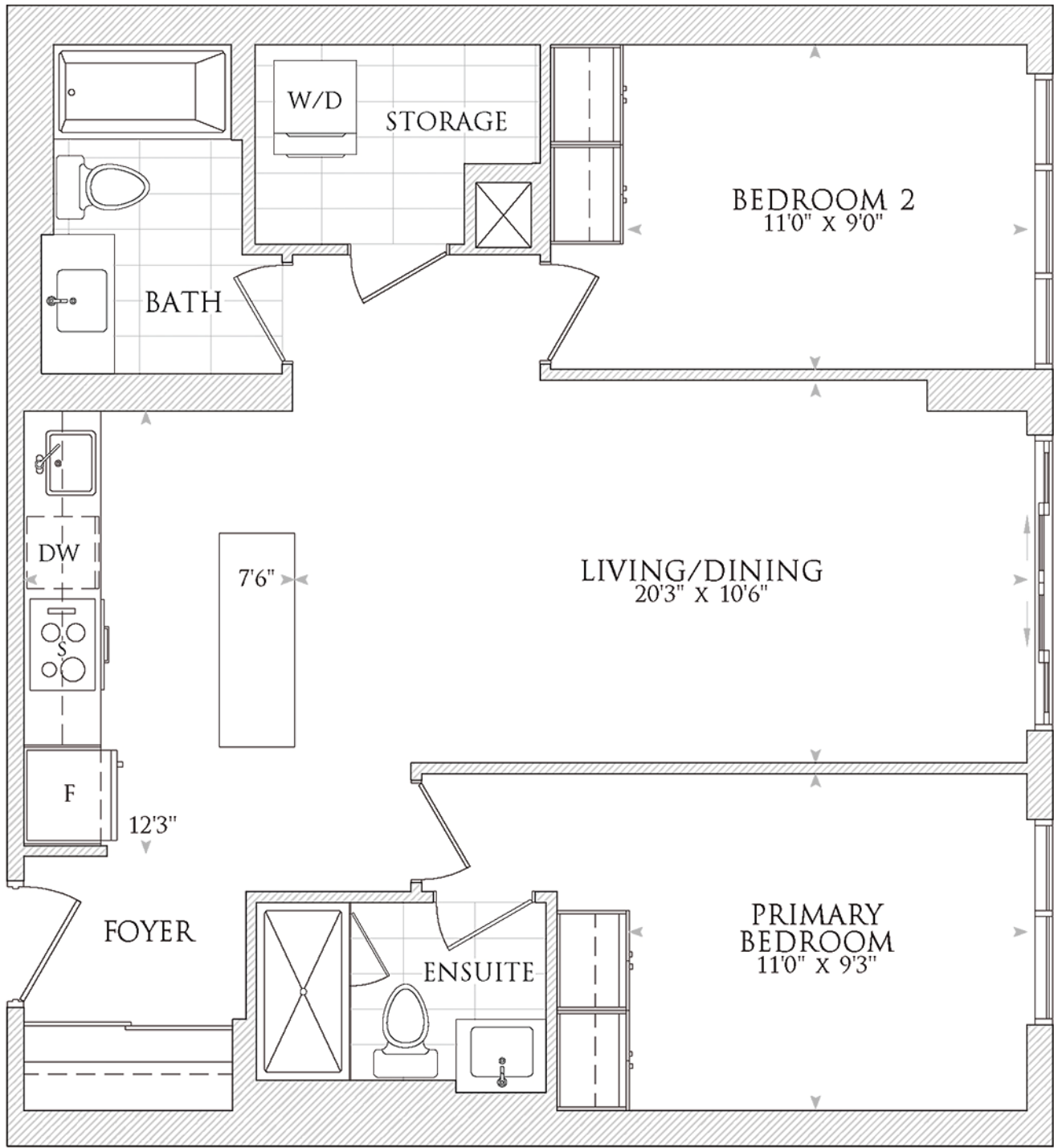
4th floor

**Note:** For specific balcony dimensions please see **Floorplan Balcony Schedule.**



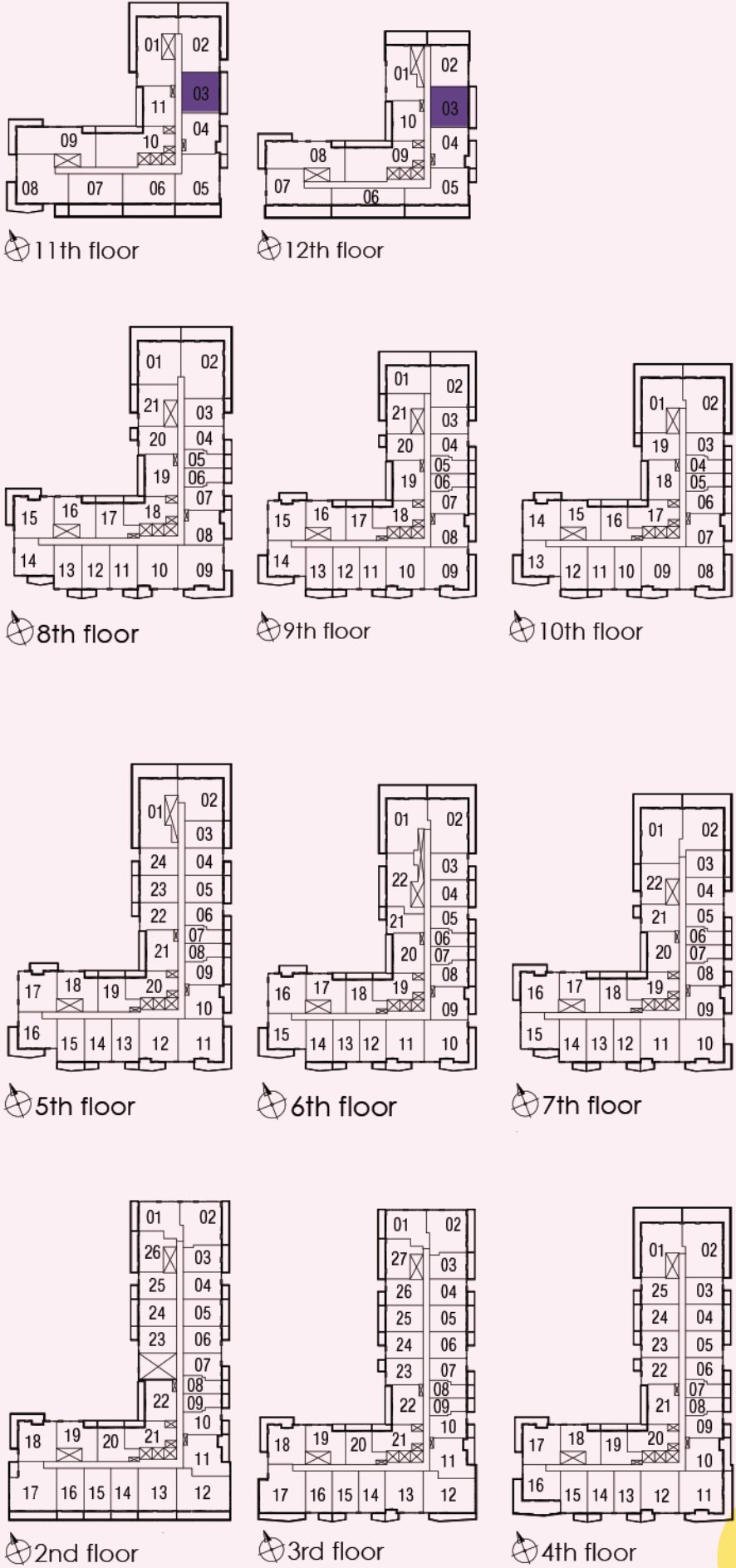
# CAPITAL

SUITE | 890 FT<sup>2</sup> | FLOORS 11 & 12 | EAST FACING



**2 BEDROOMS, 2 BATHROOMS**

Disclaimer: Dimensions, specifications, tile floor patterns and architectural detailing including window size and location) are approximated and subject to modifications without notice. Orientation of suite may be reversed, and purchaser agrees to accept the same. Actual useable floor space may vary from the stated floor area. Ceiling height measured from top to bottom floor slab to underside of the slab above before finishes and excluding bulkheads and required drop ceilings. Balcony/ terrace may vary slightly from unit to unit. Purchasers should see Schedule A to their Agreement of Purchase and Sale for unit specific details of balcony/ terrace. Suites subject to availability. All details should be confirmed with your representative. E & O.E. May 2024.

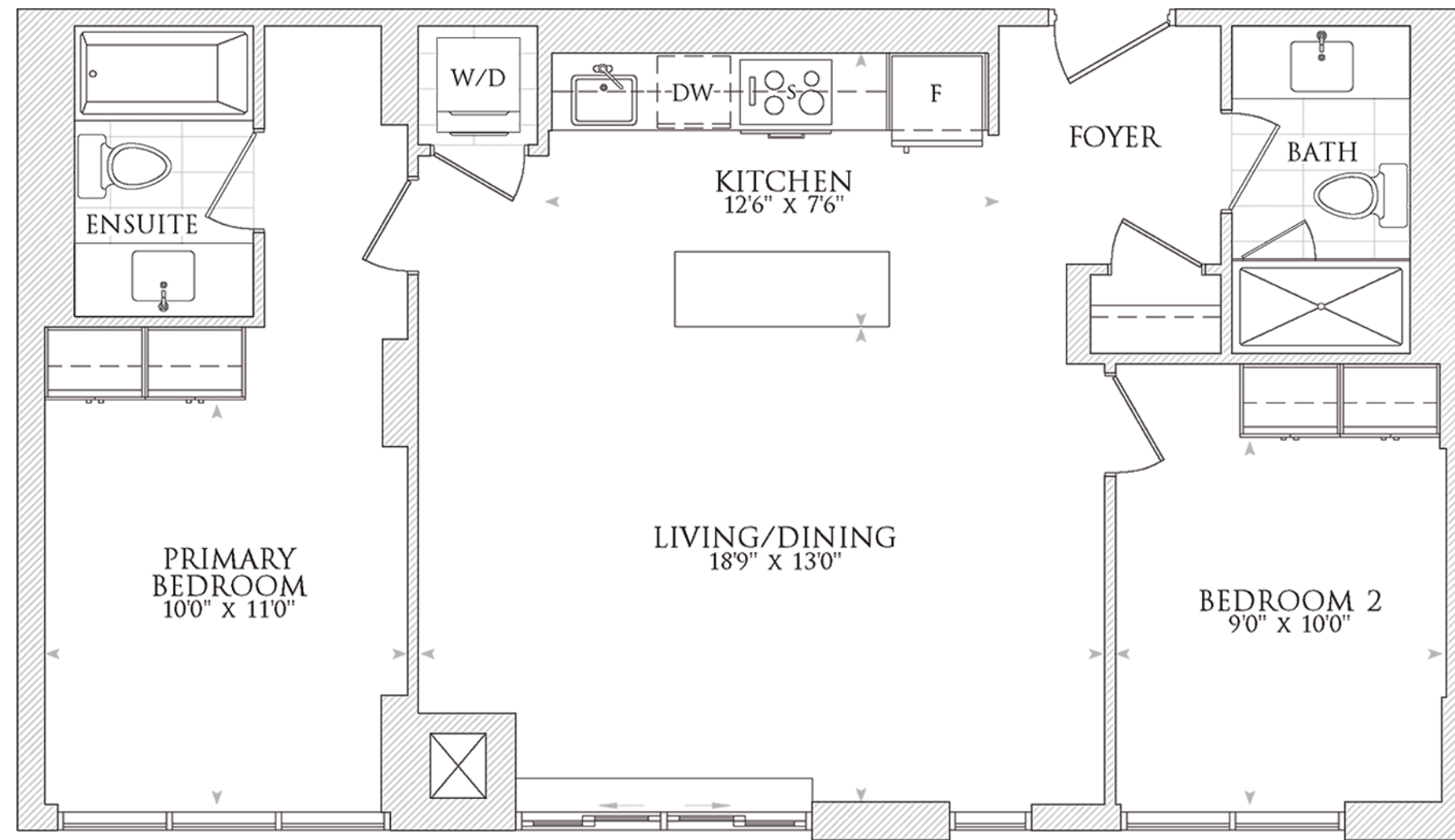


**Note:** For specific balcony dimensions please see **Floorplan Balcony Schedule.**



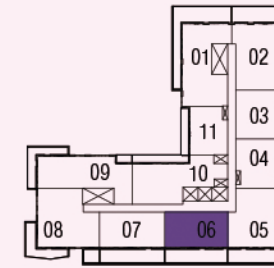
# SUPERIOR

SUITE | 900 FT<sup>2</sup> | FLOOR 11 | SOUTH FACING

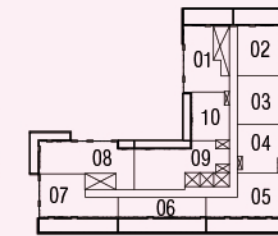


## TERRACE UNIT, 2 BEDROOMS, 2 BATHROOMS

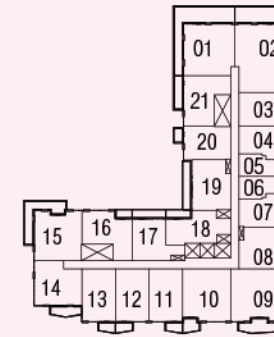
Disclaimer: Dimensions, specifications, tile floor patterns and architectural detailing including window size and location) are approximated and subject to modifications without notice. Orientation of suite may be reversed, and purchaser agrees to accept the same. Actual useable floor space may vary from the stated floor area. Ceiling height measured from top to bottom floor slab to underside of the slab above before finishes and excluding bulkheads and required drop ceilings. Balcony/ terrace may vary slightly from unit to unit. Purchasers should see Schedule A to their Agreement of Purchase and Sale for unit specific details of balcony/ terrace. Suites subject to availability. All details should be confirmed with your representative. E & O.E. May 2024.



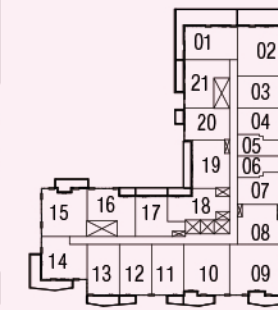
11th floor



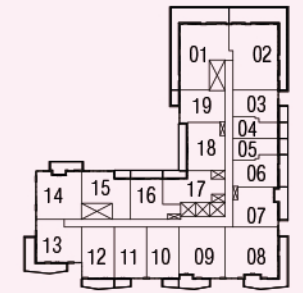
12th floor



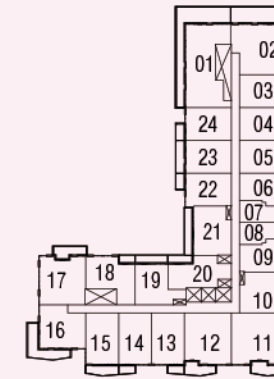
8th floor



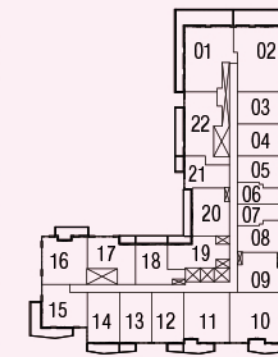
9th floor



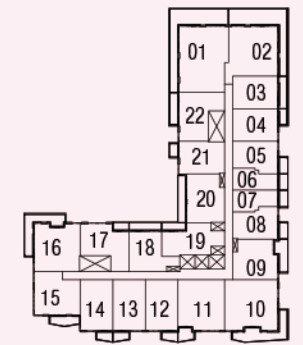
10th floor



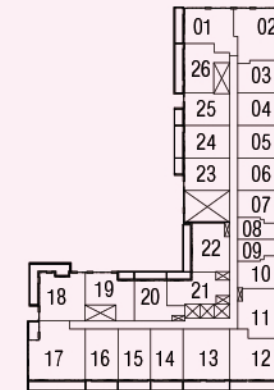
5th floor



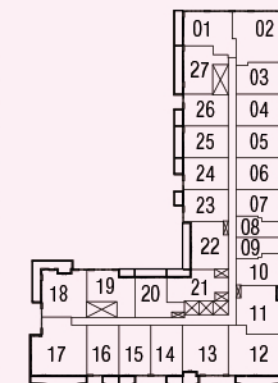
6th floor



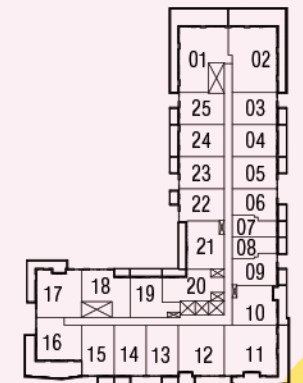
7th floor



2nd floor



3rd floor



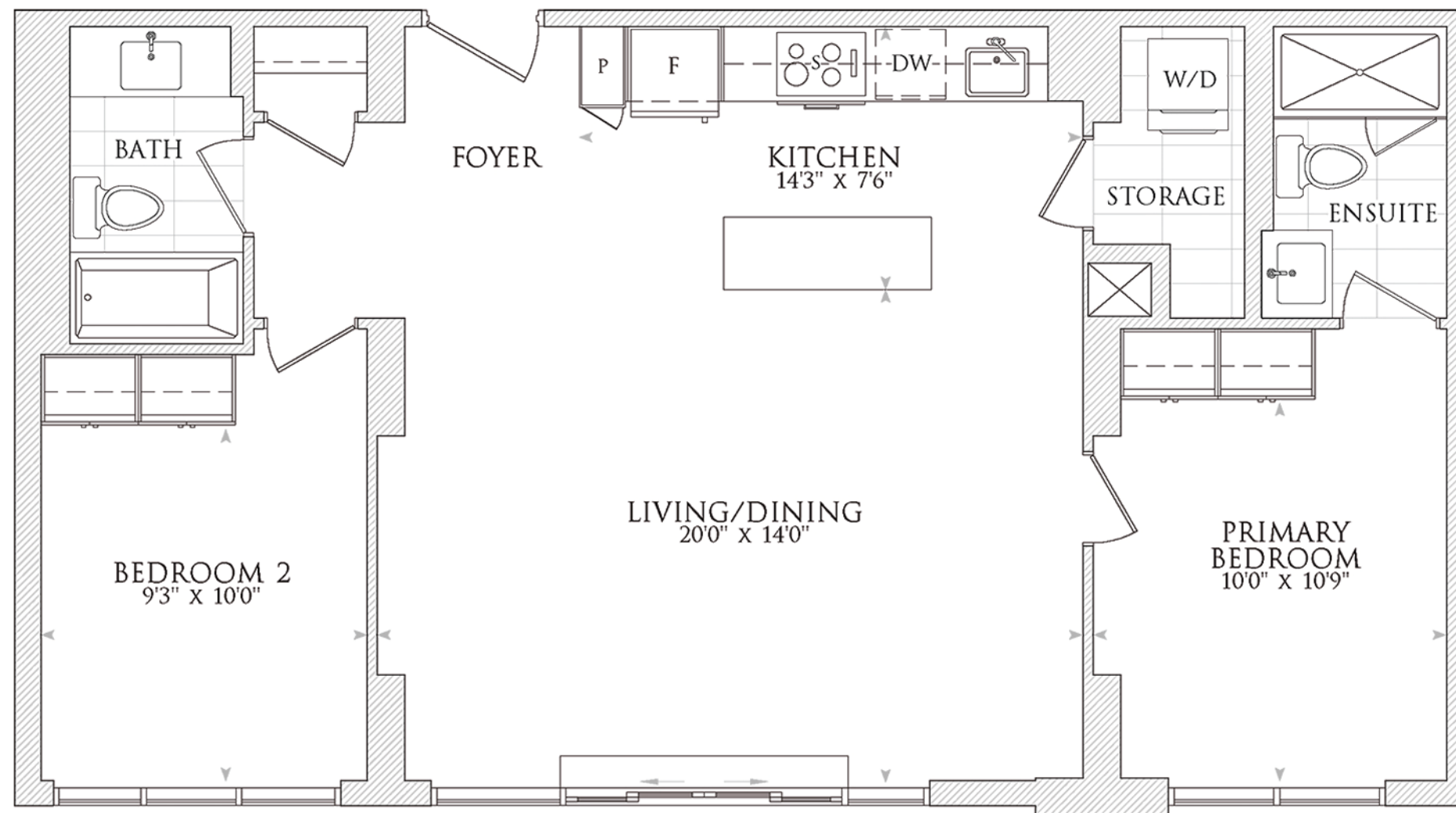
4th floor

**Note:** For specific balcony dimensions please see **Floorplan Balcony Schedule.**



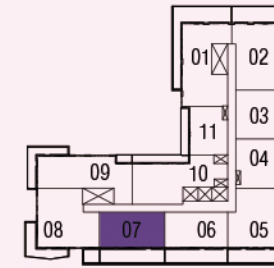
# EXCLUSIVE

SUITE | 930 FT<sup>2</sup> | FLOOR 11 | SOUTH FACING

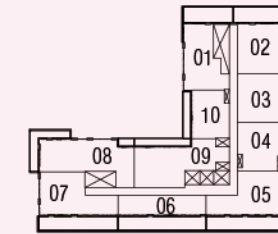


## TERRACE UNIT, 2 BEDROOMS, 2 BATHROOMS

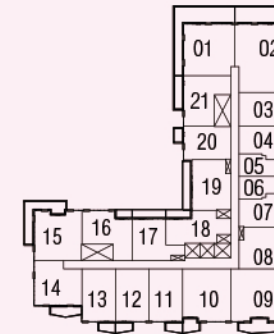
Disclaimer: Dimensions, specifications, tile floor patterns and architectural detailing including window size and location) are approximated and subject to modifications without notice. Orientation of suite may be reversed, and purchaser agrees to accept the same. Actual useable floor space may vary from the stated floor area. Ceiling height measured from top to bottom floor slab to underside of the slab above before finishes and excluding bulkheads and required drop ceilings. Balcony/ terrace may vary slightly from unit to unit. Purchasers should see Schedule A to their Agreement of Purchase and Sale for unit specific details of balcony/ terrace. Suites subject to availability. All details should be confirmed with your representative. E & O.E. May 2024.



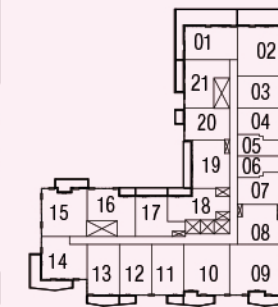
11th floor



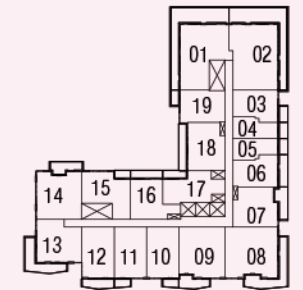
12th floor



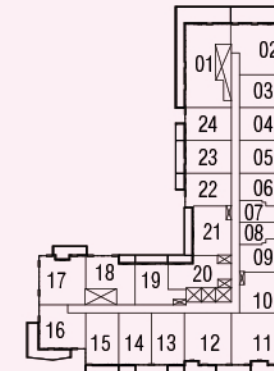
8th floor



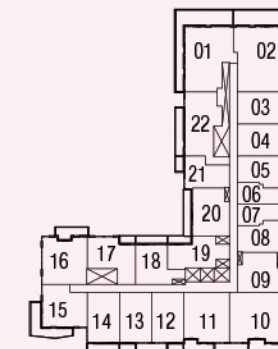
9th floor



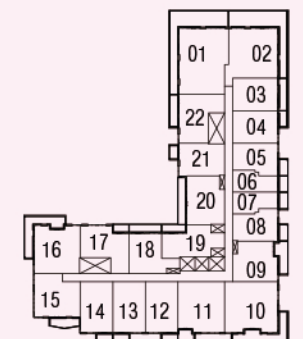
10th floor



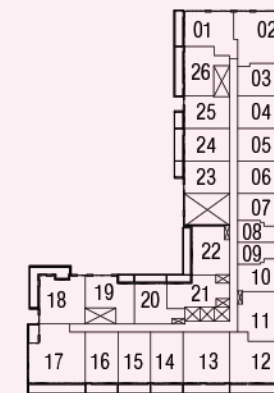
5th floor



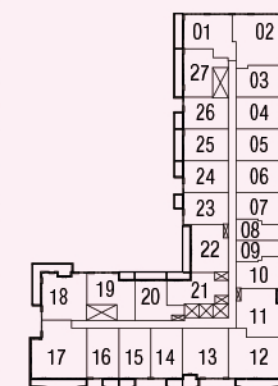
6th floor



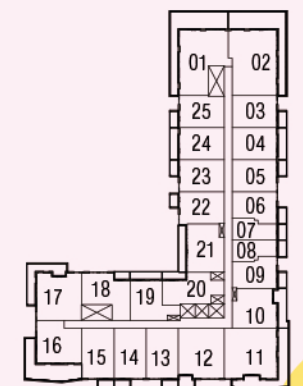
7th floor



2nd floor



3rd floor



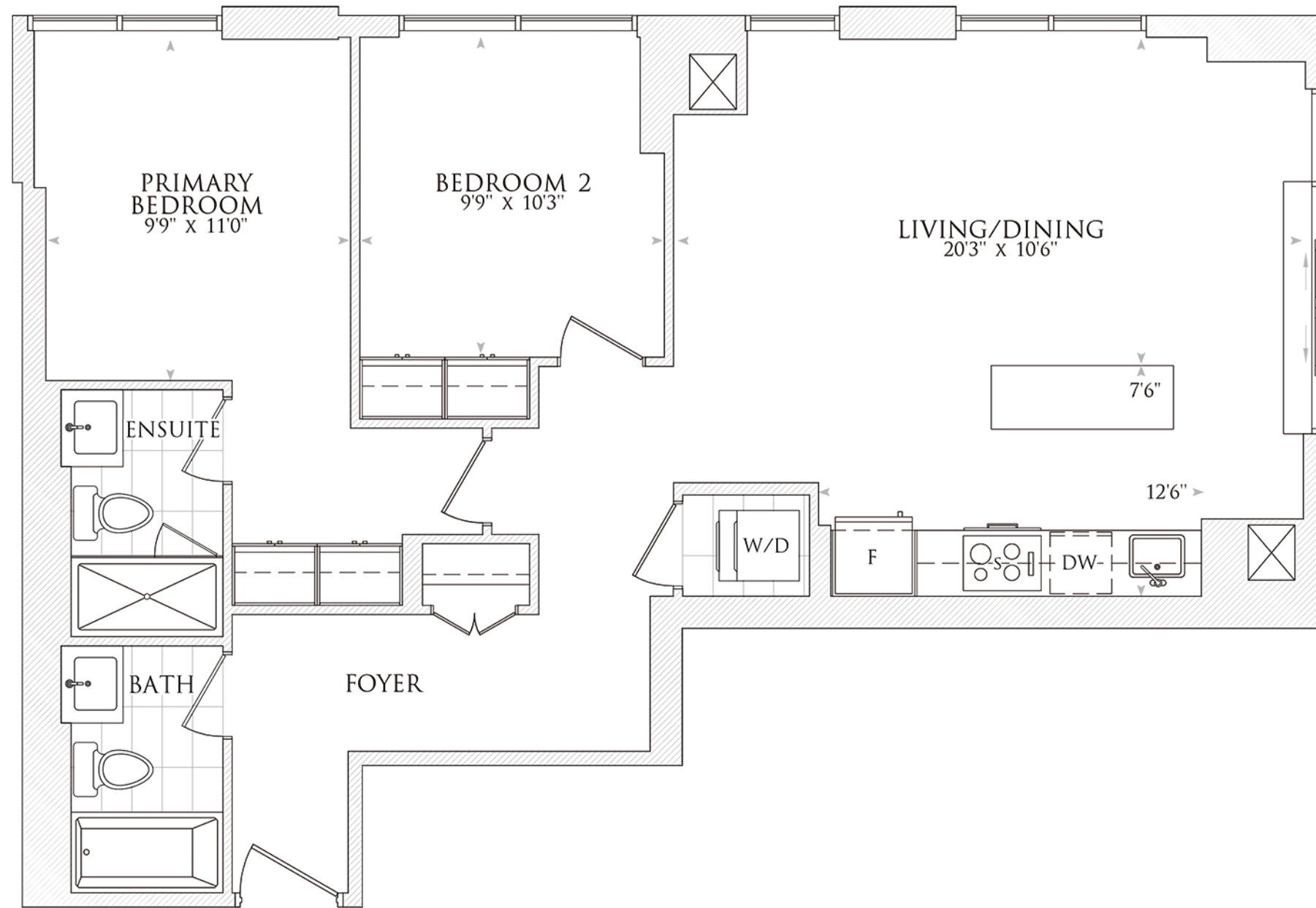
4th floor

**Note:** For specific balcony dimensions please see **Floorplan Balcony Schedule.**



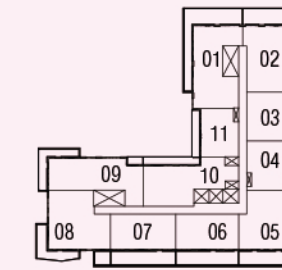
# MAJESTIC

SUITE | 996 FT<sup>2</sup> | FLOOR 12 | NORTHWEST FACING

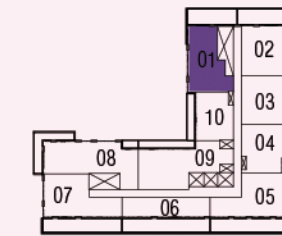


## TERRACE UNIT, 2 BEDROOMS, 2 BATHROOMS

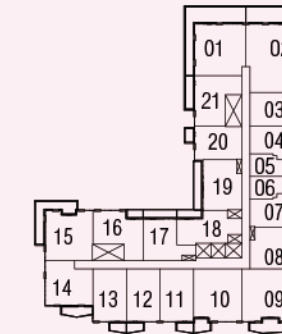
Disclaimer: Dimensions, specifications, tile floor patterns and architectural detailing including window size and location) are approximated and subject to modifications without notice. Orientation of suite may be reversed, and purchaser agrees to accept the same. Actual useable floor space may vary from the stated floor area. Ceiling height measured from top to bottom floor slab to underside of the slab above before finishes and excluding bulkheads and required drop ceilings. Balcony/ terrace may vary slightly from unit to unit. Purchasers should see Schedule A to their Agreement of Purchase and Sale for unit specific details of balcony/ terrace. Suites subject to availability. All details should be confirmed with your representative. E & O.E. May 2024.



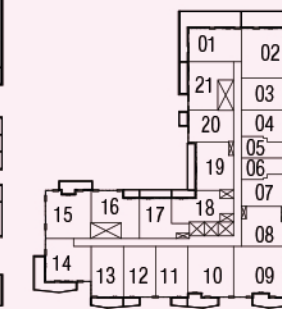
11th floor



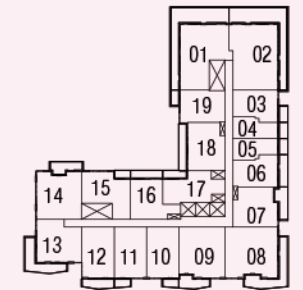
12th floor



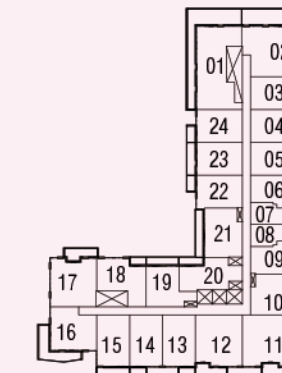
8th floor



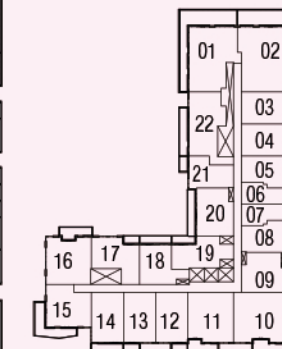
9th floor



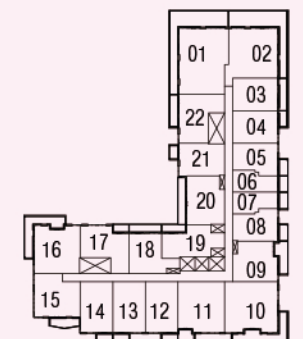
10th floor



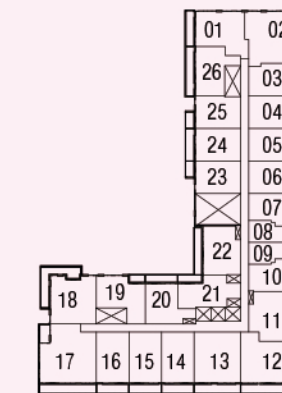
5th floor



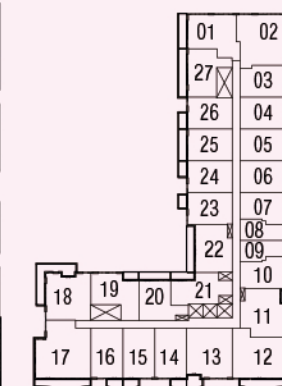
6th floor



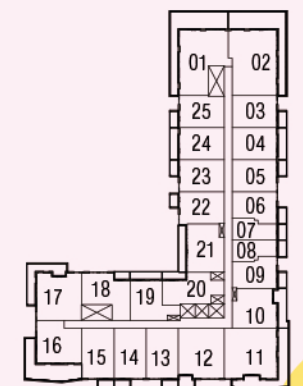
7th floor



2nd floor



3rd floor



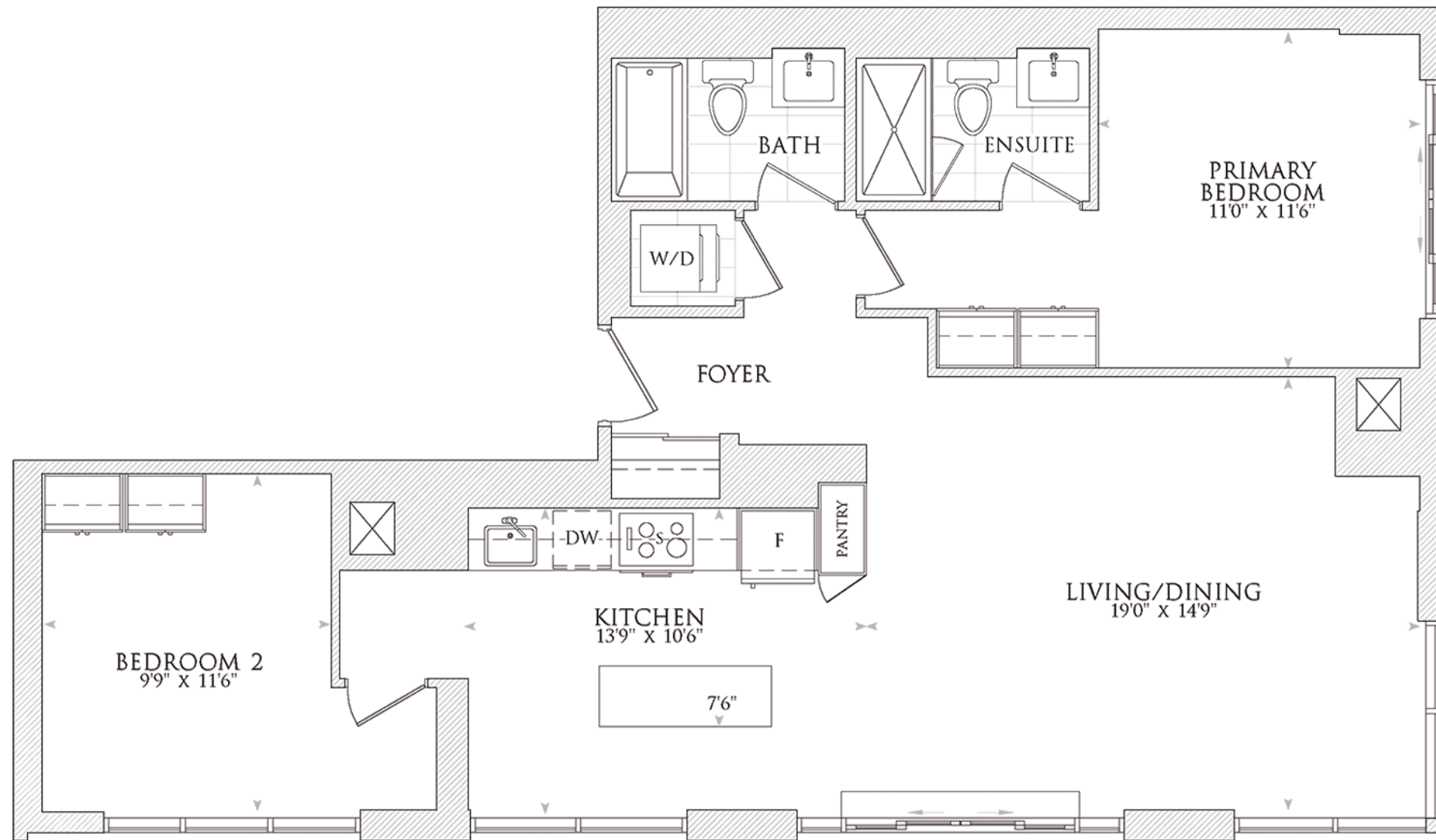
4th floor

**Note:** For specific balcony dimensions please see **Floorplan Balcony Schedule.**



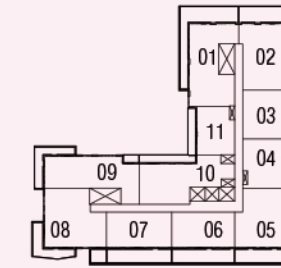
# DELUXE

SUITE | 1077 FT<sup>2</sup> | FLOOR 12 | SOUTHEAST FACING

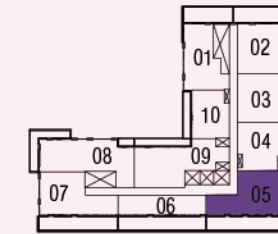


## TERRACE UNIT, 2 BEDROOMS, 2 BATHROOMS

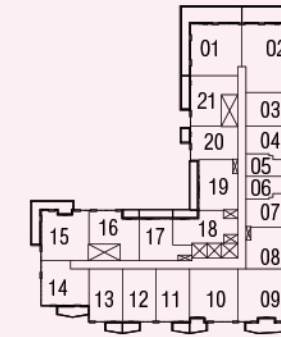
Disclaimer: Dimensions, specifications, tile floor patterns and architectural detailing including window size and location) are approximated and subject to modifications without notice. Orientation of suite may be reversed, and purchaser agrees to accept the same. Actual useable floor space may vary from the stated floor area. Ceiling height measured from top to bottom floor slab to underside of the slab above before finishes and excluding bulkheads and required drop ceilings. Balcony/ terrace may vary slightly from unit to unit. Purchasers should see Schedule A to their Agreement of Purchase and Sale for unit specific details of balcony/ terrace. Suites subject to availability. All details should be confirmed with your representative. E & O.E. May 2024.



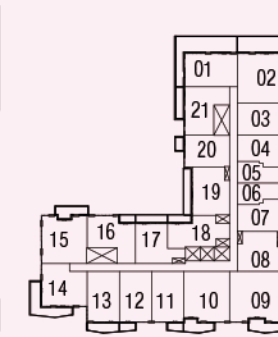
11th floor



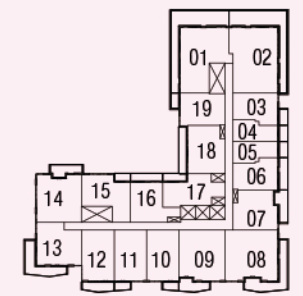
12th floor



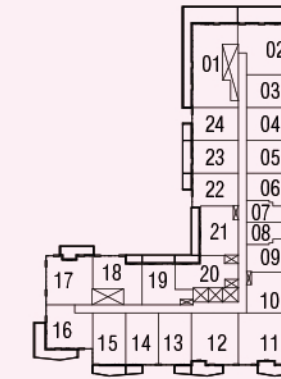
8th floor



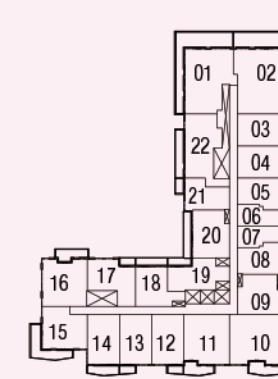
9th floor



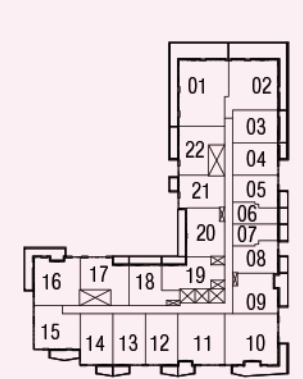
10th floor



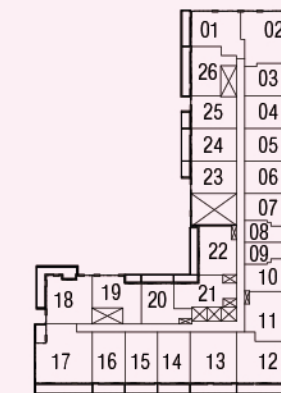
5th floor



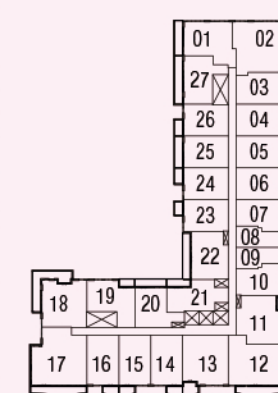
6th floor



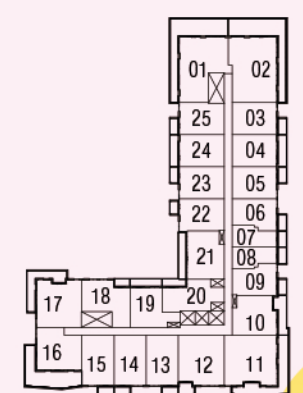
7th floor



2nd floor



3rd floor



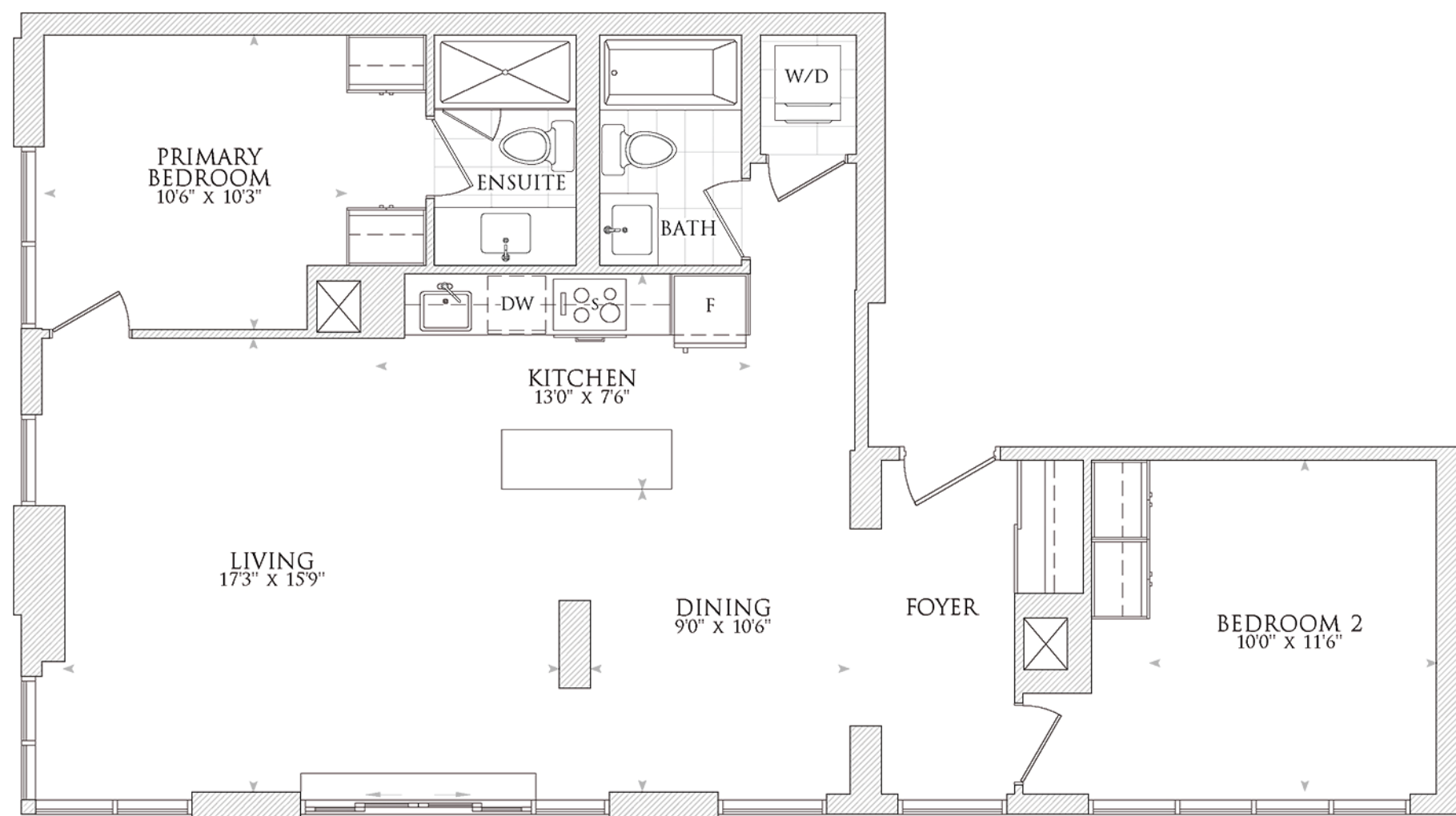
4th floor

**Note:** For specific balcony dimensions please see **Floorplan Balcony Schedule.**



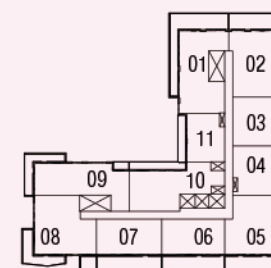
# OPULENT

SUITE | 1092 FT<sup>2</sup> | FLOOR 12 | SOUTHWEST FACING

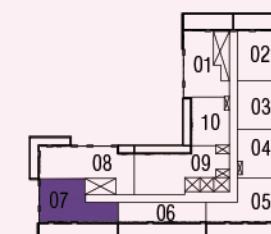


## TERRACE UNIT, 2 BEDROOMS, 2 BATHROOMS

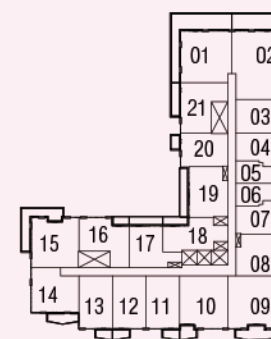
Disclaimer: Dimensions, specifications, tile floor patterns and architectural detailing including window size and location) are approximated and subject to modifications without notice. Orientation of suite may be reversed, and purchaser agrees to accept the same. Actual useable floor space may vary from the stated floor area. Ceiling height measured from top to bottom floor slab to underside of the slab above before finishes and excluding bulkheads and required drop ceilings. Balcony/ terrace may vary slightly from unit to unit. Purchasers should see Schedule A to their Agreement of Purchase and Sale for unit specific details of balcony/ terrace. Suites subject to availability. All details should be confirmed with your representative. E & O.E. May 2024.



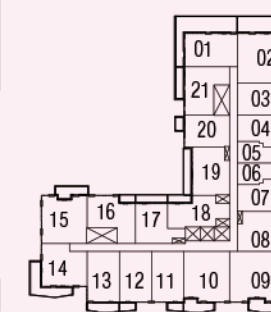
11th floor



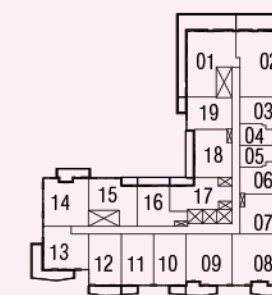
12th floor



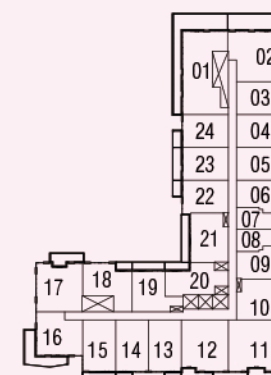
8th floor



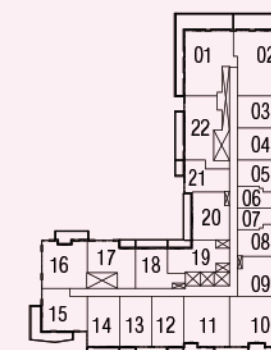
9th floor



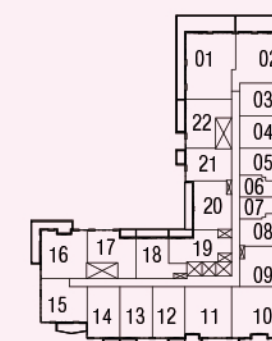
10th floor



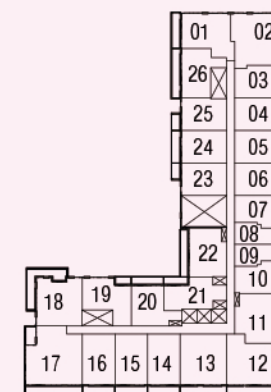
5th floor



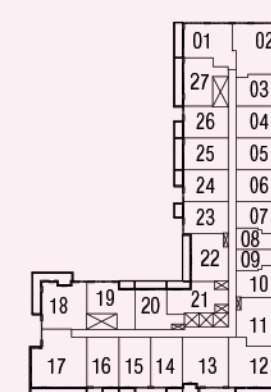
6th floor



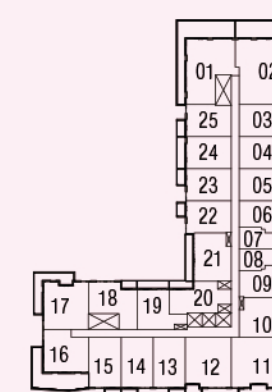
7th floor



2nd floor



3rd floor



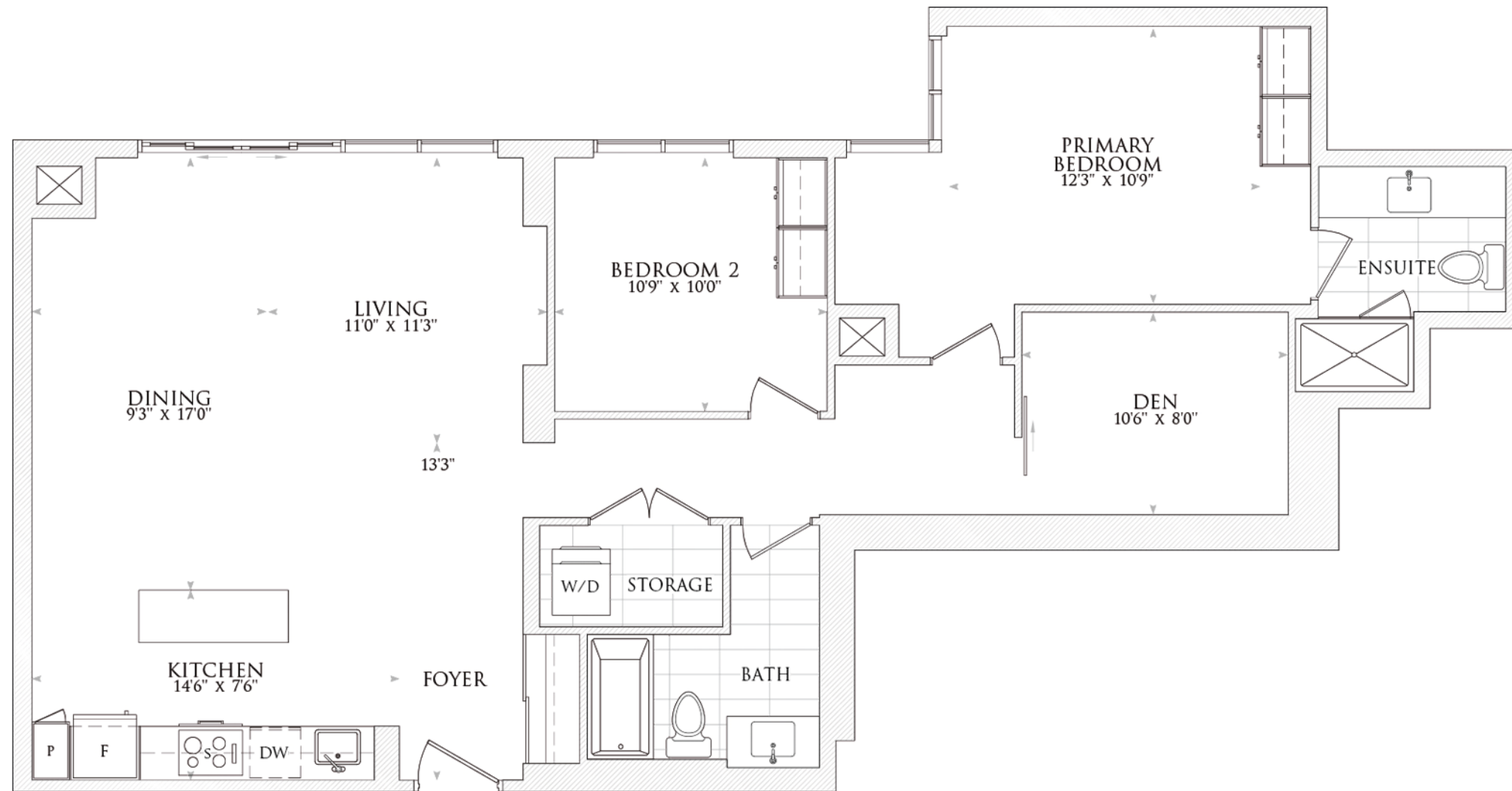
4th floor

**Note:** For specific balcony dimensions please see **Floorplan Balcony Schedule.**



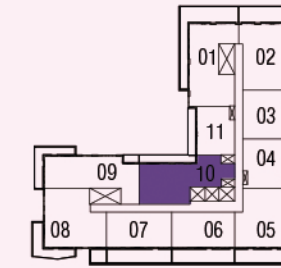
# ELITE

SUITE | 1300 FT<sup>2</sup> | FLOORS 11 & 12 | NORTH FACING

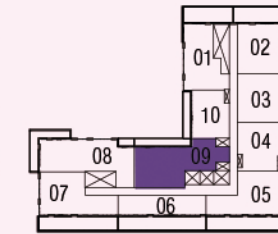


## TERRACE UNIT, 2 BEDROOMS + DEN, 2 BATHROOMS

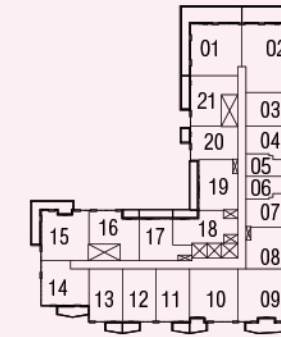
Disclaimer: Dimensions, specifications, tile floor patterns and architectural detailing including window size and location) are approximated and subject to modifications without notice. Orientation of suite may be reversed, and purchaser agrees to accept the same. Actual useable floor space may vary from the stated floor area. Ceiling height measured from top to bottom floor slab to underside of the slab above before finishes and excluding bulkheads and required drop ceilings. Balcony/ terrace may vary slightly from unit to unit. Purchasers should see Schedule A to their Agreement of Purchase and Sale for unit specific details of balcony/ terrace. Suites subject to availability. All details should be confirmed with your representative. E & O.E. May 2024.



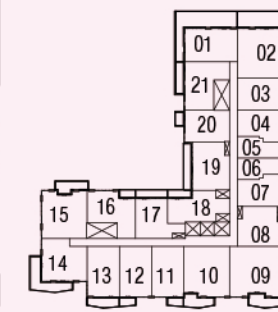
11th floor



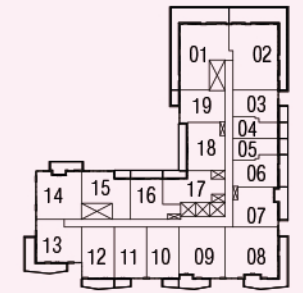
12th floor



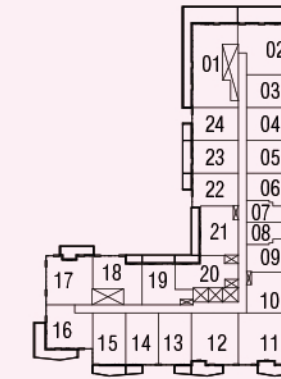
8th floor



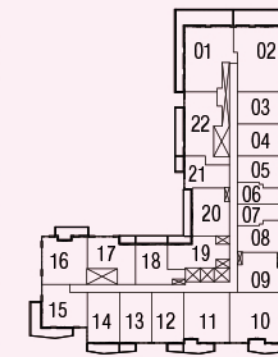
9th floor



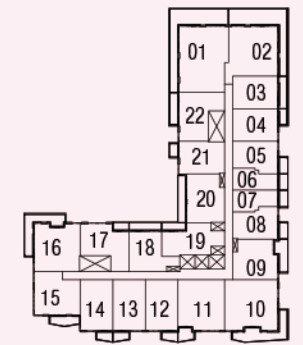
10th floor



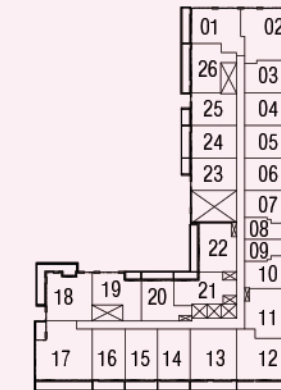
5th floor



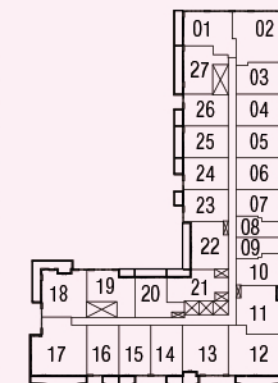
6th floor



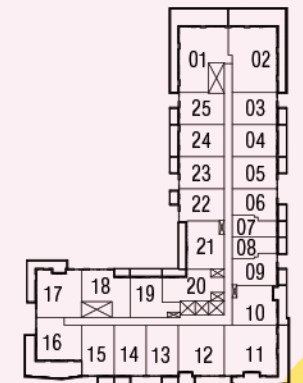
7th floor



2nd floor



3rd floor



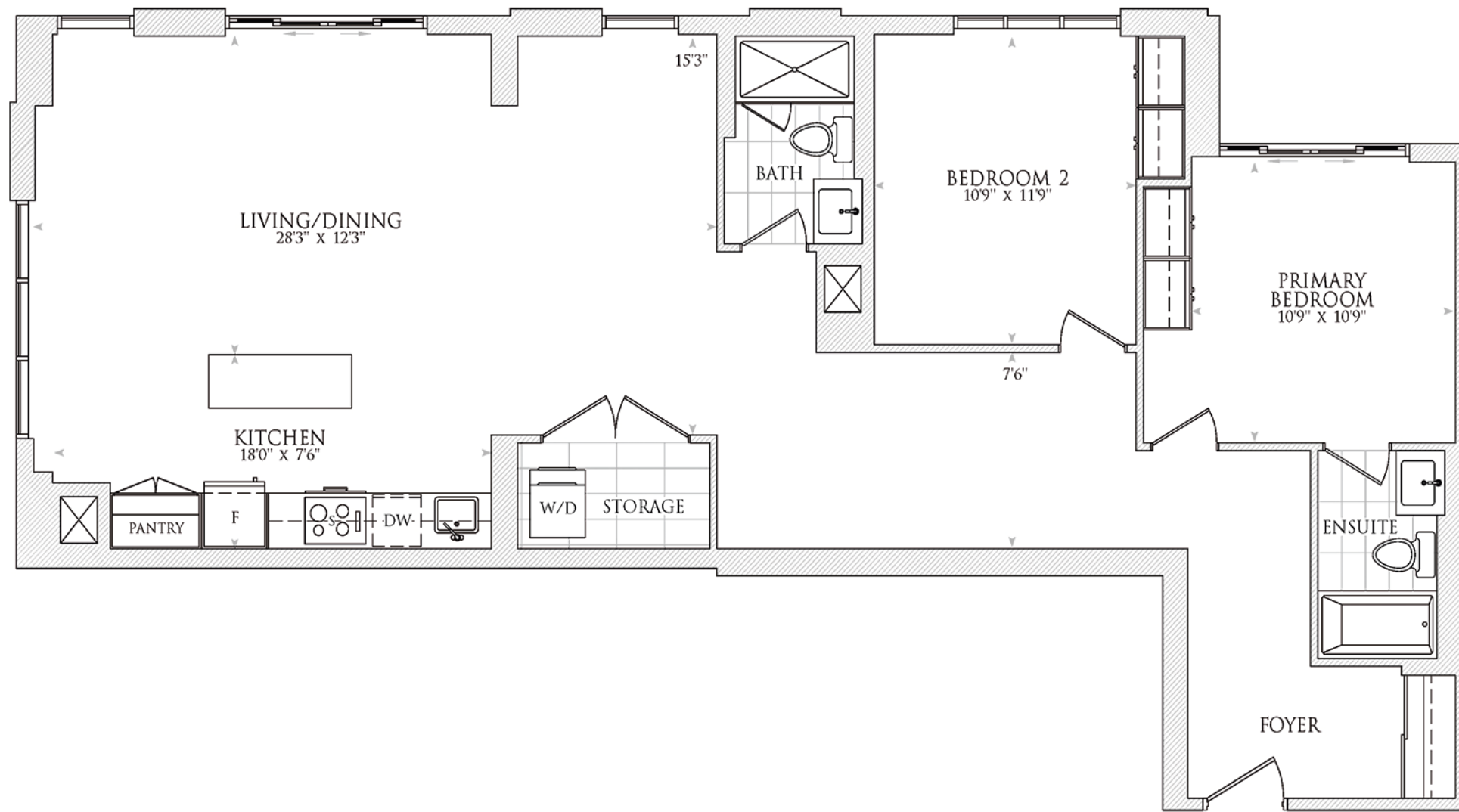
4th floor

**Note:** For specific balcony dimensions please see **Floorplan Balcony Schedule.**



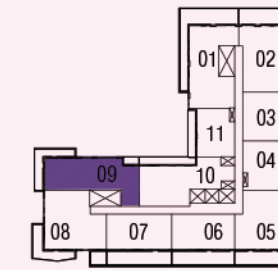
# PROMINENCE

SUITE | 1357 FT<sup>2</sup> | FLOORS 11 & 12 | NORTHWEST FACING

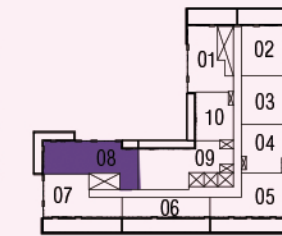


## TERRACE UNIT, 2 BEDROOMS, 2 BATHROOMS

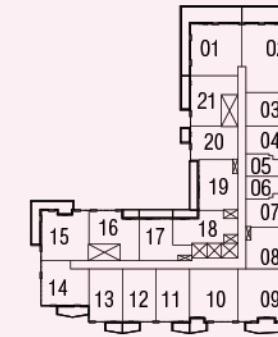
Disclaimer: Dimensions, specifications, tile floor patterns and architectural detailing including window size and location) are approximated and subject to modifications without notice. Orientation of suite may be reversed, and purchaser agrees to accept the same. Actual useable floor space may vary from the stated floor area. Ceiling height measured from top to bottom floor slab to underside of the slab above before finishes and excluding bulkheads and required drop ceilings. Balcony/ terrace may vary slightly from unit to unit. Purchasers should see Schedule A to their Agreement of Purchase and Sale for unit specific details of balcony/ terrace. Suites subject to availability. All details should be confirmed with your representative. E & O.E. May 2024.



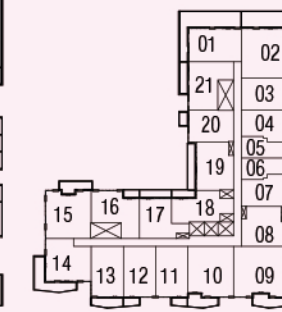
11th floor



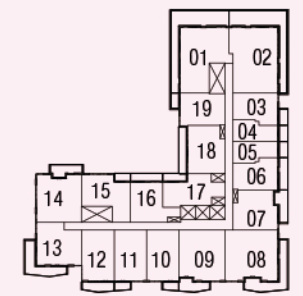
12th floor



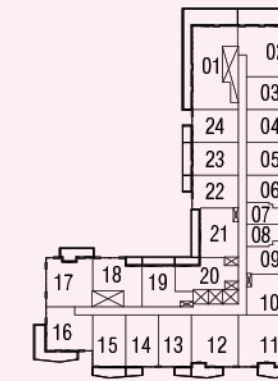
8th floor



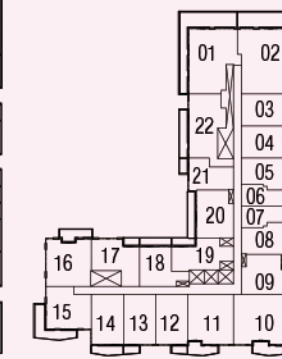
9th floor



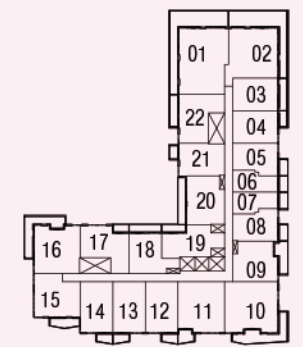
10th floor



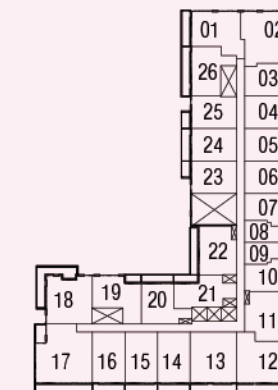
5th floor



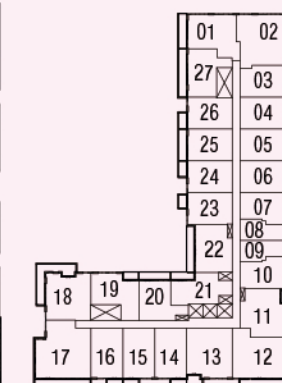
6th floor



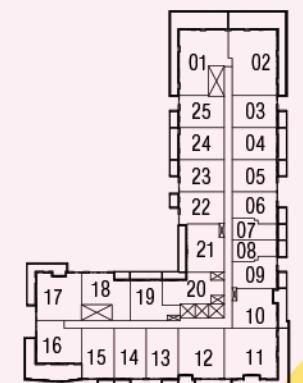
7th floor



2nd floor



3rd floor



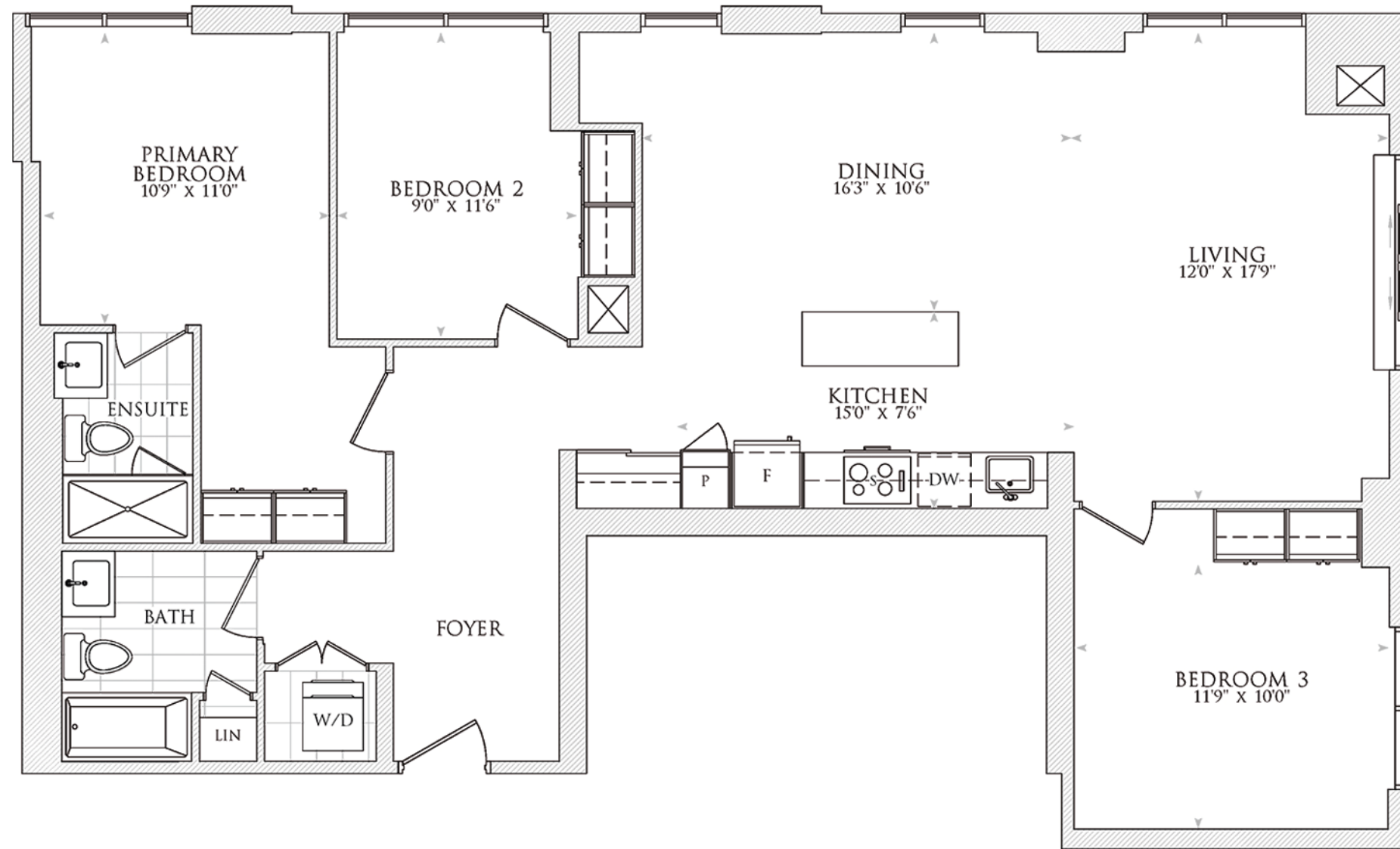
4th floor

**Note:** For specific balcony dimensions please see **Floorplan Balcony Schedule.**



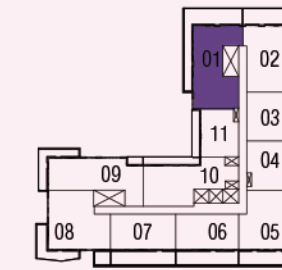
# PRESTIGE

SUITE | 1406 FT<sup>2</sup> | FLOOR 11 | NORTHWEST FACING

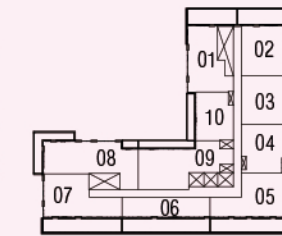


## TERRACE UNIT, 3 BEDROOMS, 2 BATHROOMS

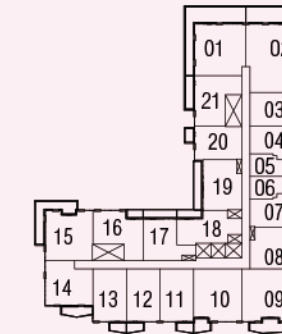
Disclaimer: Dimensions, specifications, tile floor patterns and architectural detailing including window size and location) are approximated and subject to modifications without notice. Orientation of suite may be reversed, and purchaser agrees to accept the same. Actual useable floor space may vary from the stated floor area. Ceiling height measured from top to bottom floor slab to underside of the slab above before finishes and excluding bulkheads and required drop ceilings. Balcony/ terrace may vary slightly from unit to unit. Purchasers should see Schedule A to their Agreement of Purchase and Sale for unit specific details of balcony/ terrace. Suites subject to availability. All details should be confirmed with your representative. E & O.E. May 2024.



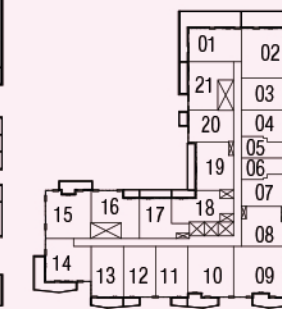
11th floor



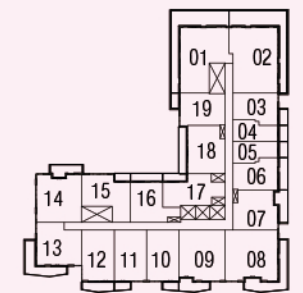
12th floor



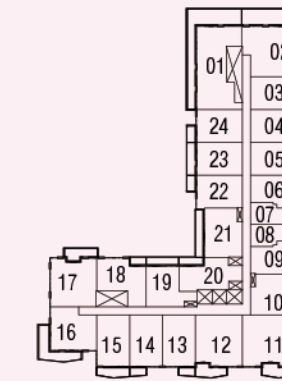
8th floor



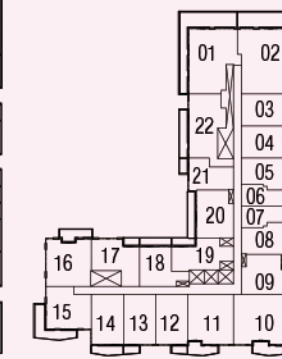
9th floor



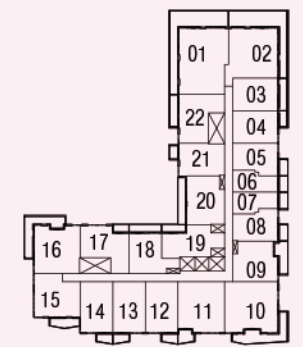
10th floor



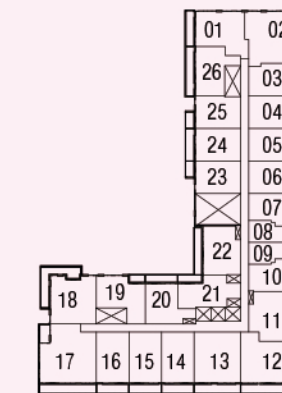
5th floor



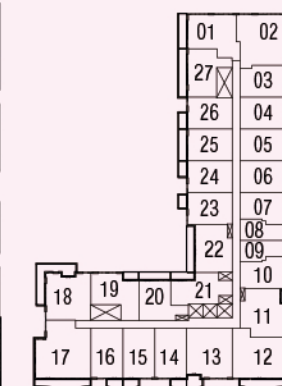
6th floor



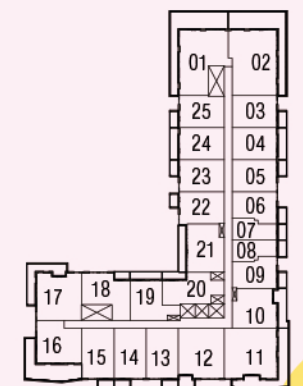
7th floor



2nd floor



3rd floor



4th floor

**Note:** For specific balcony dimensions please see **Floorplan Balcony Schedule.**